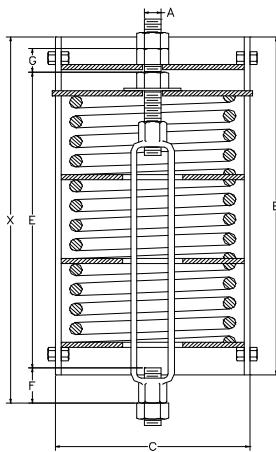
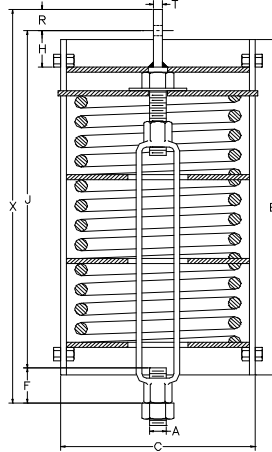


# AAA TECHNOLOGY & SPECIALTIES CO., INC.

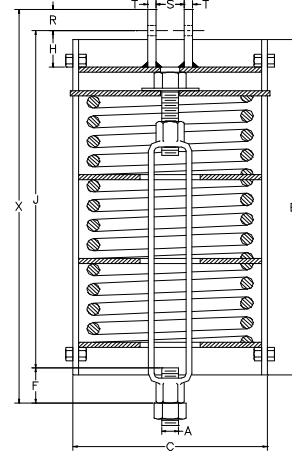
## SERIES E100



TYPE A



TYPE B



TYPE C

1. The casing diameters shown for each spring hanger size are for all Types of spring hangers.
2. The casing lengths shown are for Types A, B, C, D, E and G only.
3. All Rod Takeout dimensions shown in the tables for Type A, B and C spring hangers are calculated with the spring hanger at the top of the movement scale.
4. All Minimum Overall Length values shown in the tables for Type A, B and C spring hangers are calculated with the spring hanger at the top of the movement scale. All Maximum Overall Length values shown in the tables for Type A, B and C spring hangers are calculated with the spring hanger at the bottom of the movement scale. To obtain the actual shipping length, add the deflection from the top of the scale to the preset position to the minimum overall length.
5. All Maximum Overall Length values shown in the tables for Type D spring hangers are calculated with the spring hanger at the top of the movement scale. All Minimum Overall Length values shown in the tables for Type D spring hangers are calculated with the spring hanger at the bottom of the movement scale. To obtain the actual shipping length, subtract the deflection from the top of the scale to the preset position from the maximum overall length.

HANGER SIZE	LOAD RATING (LBS)	APRX WT. EACH (LBS)	ROD DIA. A (IN)	R.H. TH'D L'GTH	CASING LENGTH B (IN)	CASING OUTSIDE DIA C (IN)	MIN. TH'D ENGAGE F (IN)	TYPE A					TYPE B & C		ROD TAKE-OUT (IN)		OVERALL LENGTH X (IN)			
								ROD ENGAGE G (IN)	H (IN)	R (IN)	S (IN)	T (IN)	LUG HOLE DIA. (IN)	TYPE A	B & C	TYPE A		TYPES B & C		
																E (IN)	J (IN)	MIN.	MAX	MIN.
														E (IN)	J (IN)					
000	19	17	1/2	3 1/2	21	4	3/4	7/8	2 1/4	1 1/4	7/8	1/4	11/16	24	26 5/8	26 3/16	33 11/16	28 5/8	36 1/8	
00	45	18	1/2	3 1/2	21	4	3/4	7/8	2 1/4	1 1/4	7/8	1/4	11/16	24	26 5/8	26 3/16	33 11/16	28 5/8	36 1/8	
0	69	18	1/2	3 1/2	21	4	3/4	7/8	2 1/4	1 1/4	7/8	1/4	11/16	24	26 5/8	26 3/16	33 11/16	28 5/8	36 1/8	
1	100	21	1/2	3 1/2	23 1/2	4	3/4	7/8	2 1/4	1 1/4	7/8	1/4	11/16	24 3/4	27 3/8	26 15/16	34 7/16	29 3/8	36 7/8	
2	128	24	1/2	3 1/2	25 3/4	4	3/4	7/8	2 1/4	1 1/4	7/8	1/4	11/16	25 1/2	28 1/8	27 11/16	35 3/16	30 1/8	37 5/8	
3	166	33	1/2	3 1/2	22 3/4	5 9/16	3/4	7/8	2 1/4	1 1/4	7/8	1/4	11/16	24 1/2	27 1/8	26 11/16	34 3/16	29 1/8	36 5/8	
4	223	36	1/2	3 1/2	24 3/8	5 9/16	3/4	7/8	2 1/4	1 1/4	7/8	1/4	11/16	24 7/8	27 1/2	27 1/16	34 9/16	29 1/2	37	
5	299	40	1/2	3 1/2	27	5 9/16	3/4	7/8	2 1/4	1 1/4	7/8	1/4	11/16	26	28 5/8	28 3/16	35 11/16	30 5/8	38 1/8	
6	399	60	5/8	4	26 3/4	6 5/8	7/8	1	2 1/4	1 1/4	1 1/16	1/4	13/16	27 15/16	30 9/16	30 1/4	37 3/4	32 11/16	40 3/16	
7	532	73	5/8	4	29	6 5/8	7/8	1	2 1/4	1 1/4	1 1/16	1/4	13/16	28 3/8	31 1/16	30 3/4	38 1/4	33 3/16	40 11/16	
8	713	95	5/8	4	31	6 5/8	7/8	1	2 1/4	1 1/4	1 1/16	1/4	13/16	29 3/8	32 1/16	31 3/4	39 1/4	34 3/16	41 11/16	
9	950	132	3/4	4	30 1/2	8 5/8	7/8	1 3/8	2 1/4	1 1/4	1 1/4	3/8	15/16	32 1/8	35 1/16	34 3/4	42 1/4	37 3/16	44 11/16	
10	1235	166	3/4	4	34 3/4	8 5/8	7/8	1 3/8	2 1/4	1 1/4	1 1/4	3/8	15/16	33 5/8	36 9/16	36 1/4	43 3/4	38 11/16	46 3/16	
11	1615	138	3/4	5	28	8 5/8	7/8	1 3/8	2 1/4	1 1/4	1 1/4	3/8	15/16	31 3/8	34 5/16	34	41 1/2	36 7/16	43 15/16	
12	2138	156	1	5	30 1/2	8 5/8	1 1/2	1 5/8	3	1 1/2	1 5/8	1/2	1 1/4	29 7/8	33 9/16	33 1/8	40 5/8	36 9/16	44 1/16	
13	2850	209	1	5	38 1/4	8 5/8	1 1/2	1 5/8	3	1 1/2	1 5/8	1/2	1 1/4	37 1/2	41 3/16	40 3/4	48 1/4	44 3/16	51 11/16	
14	3800	222	1 1/4	5	38 7/8	8 5/8	1 5/8	1 7/8	4	2	2	5/8	1 1/2	38 13/16	43 7/16	42 1/8	49 5/8	47 1/16	54 9/16	
15	5130	235	1 1/4	5	38 7/8	8 5/8	1 5/8	2 1/8	4	2	2	5/8	1 1/2	38 9/16	43 7/16	42 1/4	49 3/4	47 1/16	54 9/16	
16	7125	308	1 1/2	6	46 1/2	8 5/8	1 3/4	2 3/8	4	2 1/2	2 3/8	3/4	1 3/4	46 7/16	51 5/16	50 1/4	57 3/4	55 9/16	63 1/16	
17	9500	392	1 3/4	7	53 1/2	8 5/8	2 1/4	2 5/8	4	2 1/2	2 5/8	3/4	2	53 9/16	58 7/16	58 1/8	65 5/8	63 3/16	70 11/16	
18	12645	704	2	7	52	12 3/4	2 1/2	3 1/8	4	3	2 7/8	3/4	2 3/8	50 7/16	55 9/16	55 15/16	63 7/16	61 1/16	68 9/16	
19	16805	846	2 1/4	8	59	12 3/4	3 1/8	3 3/8	4	3	3 1/8	3/4	2 5/8	58 7/16	63 9/16	64 9/16	72 1/16	69 11/16	77 3/16	
20	22325	1161	2 1/2	9	71 1/2	12 3/4	3 1/8	4 1/8	5	4	3 3/8	3/4	2 7/8	67 9/16	74 3/16	75 1/8	82 5/8	81 5/16	88 13/16	
21	29688	1422	2 3/4	9	79	12 3/4	4 1/8	4 3/8	5	4	3 5/8	3/4	3 1/8	75 15/16	82 9/16	84 1/2	92	90 11/16	98 3/16	
22	39591	1796	3	9	97 1/4	12 3/4	4 1/2	4 5/8	6	4	3 7/8	1	3 3/8	90 15/16	98 9/16	100 3/16	107 11/16	107 1/16	114 9/16	