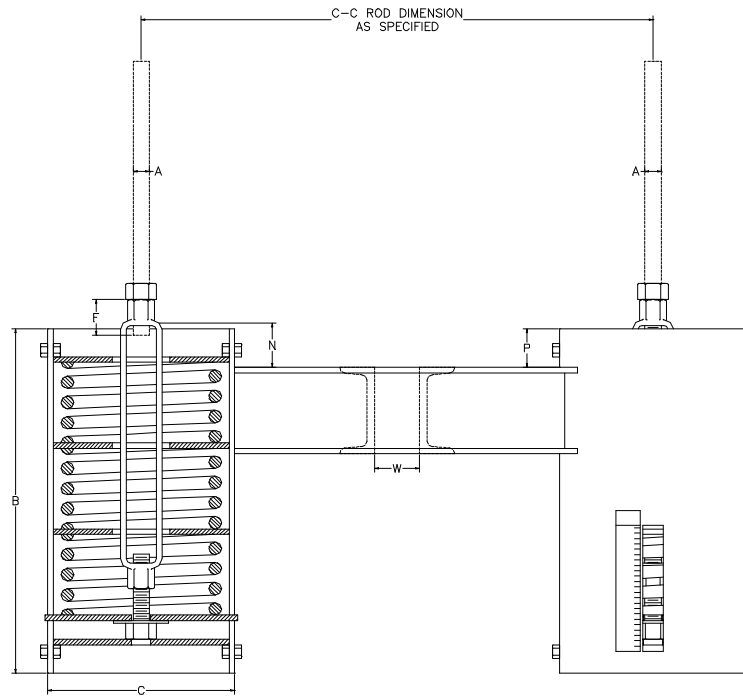


# AAA TECHNOLOGY & SPECIALTIES CO., INC.

## SERIES E100



TYPE G

1. The casing diameters shown for each spring hanger size are for all Types of spring hangers.
2. The casing lengths shown are for Types A, B, C, D, E and G only.
3. The weights shown for all Type G spring hangers are based upon 24 inch center to center lengths.

HANGER SIZE	LOAD RATING EACH (LBS)	WEIGHT APPROX TOTAL (LBS)	ROD DIA. A (IN)	R.H. TH'D L'GTH (IN)	CASING LENGTH B (IN)	CASING OUTSIDE DIA C (IN)	MIN. TH'D ENGAGEMENT F (IN)	ROD TAKE-OUT N (IN)	CHANNEL SIZE	MAX C - C (IN)	SPACE BETWEEN CHANNELS W (IN)	EDGE TO CHANNEL P (IN)
000	19	45	1/2	3 1/2	21	4	3/4	3 1/16	C3 X 4.1	24	5/8	1 1/2
00	45	47	1/2	3 1/2	21	4	3/4	3 1/16	C3 X 4.1	24	5/8	1 1/2
0	69	47	1/2	3 1/2	21	4	3/4	3 1/16	C3 X 4.1	24	5/8	1 1/2
1	100	53	1/2	3 1/2	23 1/2	4	3/4	3 1/16	C3 X 4.1	24	5/8	1 1/2
2	128	57	1/2	3 1/2	25 3/4	4	3/4	2 11/16	C3 X 4.1	24	5/8	1 1/2
3	166	72	1/2	3 1/2	22 3/4	5 9/16	3/4	2 11/16	C3 X 4.1	30	3/4	1 1/2
4	223	78	1/2	3 1/2	24 3/8	5 9/16	3/4	2 5/16	C3 X 4.1	30	3/4	1 1/2
5	299	84	1/2	3 1/2	27	5 9/16	3/4	2 3/8	C3 X 4.1	30	3/4	1 1/2
6	399	120	5/8	4	26 3/4	6 5/8	7/8	2 15/16	C3 X 4.1	36	1	2
7	532	140	5/8	4	29	6 5/8	7/8	2 11/16	C3 X 4.1	36	1	2
8	713	182	5/8	4	31	6 5/8	7/8	2 3/4	C3 X 4.1	36	1	2
9	950	252	3/4	4	30 1/2	8 5/8	7/8	3 13/16	C4 X 5.4	36	1 1/4	2
10	1235	312	3/4	4	34 3/4	8 5/8	7/8	2 7/8	C4 X 5.4	36	1 1/4	2
11	1615	262	3/4	5	28	8 5/8	7/8	3 1/4	C4 X 5.4	36	1 1/4	2
12	2138	298	1	5	30 1/2	8 5/8	1 1/2	2 11/16	C5 X 6.7	36	1 1/2	2
13	2850	394	1	5	38 1/4	8 5/8	1 1/2	3 7/16	C5 X 6.7	36	1 1/2	2
14	3800	414	1 1/4	5	38 7/8	8 5/8	1 5/8	2 11/16	C5 X 6.7	34	1 1/2	2
15	5130	448	1 1/4	5	38 7/8	8 5/8	1 5/8	2	C6 X 10.5	36	2 1/8	2
16	7125	595	1 1/2	6	46 1/2	8 5/8	1 3/4	3 1/8	C8 X 11.5	36	2 1/8	2
17	9500	735	1 3/4	7	53 1/2	8 5/8	2 1/4	3 1/2	C8 X 11.5	36	2 1/8	2
18	12645	1304	2	7	52	12 3/4	2 1/2	2 3/4	C12 X 20.7	42	2 3/8	3
19	16805	1562	2 1/4	8	59	12 3/4	3 1/8	3 3/8	C12 X 20.7	42	2 5/8	3
20	22325	2132	2 1/2	9	71 1/2	12 3/4	3 1/8	3 1/4	C12 X 20.7	40	2 7/8	3
21	29688	2628	2 3/4	9	79	12 3/4	4 1/8	3	C15 X 33.9	48	3 1/8	3
22	39591	3308	3	9	97 1/4	12 3/4	4 1/2	3 7/8	C15 X 33.9	48	3 3/8	3