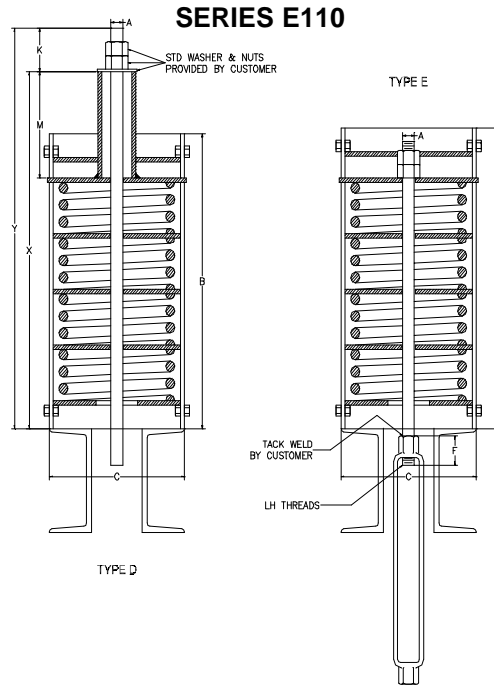


AAA TECHNOLOGY & SPECIALTIES CO., INC.



1. The casing diameters shown for each spring hanger size are for all Types of spring hangers.
2. The casing lengths shown are for Types A, B, C, D, E and G only.
3. All Maximum Overall Length values shown in the tables for Type D spring hangers are calculated with the spring hanger at the top of the movement scale. All Minimum Overall Length values shown in the tables for Type D spring hangers are calculated with the spring hanger at the bottom of the movement scale. To obtain the actual shipping length, subtract the deflection from the top of the scale to the preset position from the maximum overall length.

HANGER SIZE	LOAD RATING (LBS)	APRX WT. EACH (LBS)	ROD DIA. A (IN)	R.H. TH'D L'GTH	CASING LENGTH B (IN)	CASING OUTSIDE DIA C (IN)	MIN. TH'D ENGAGE F (IN)	ALLOW FOR NUTS K (IN)	HEIGHT OF SPACER M (MAX) (IN)	ROD LENGTH Y (MAX) (IN)	OVERALL LENGTH X (IN)	
											TYPE D	
											MIN.	MAX
000	19	20	1/2	3 1/2	27	4	3/4	1 1/4	16	43 3/16	31 15/16	41 15/16
00	45	21	1/2	3 1/2	27	4	3/4	1 1/4	16	43 3/16	31 15/16	41 15/16
0	69	20	1/2	3 1/2	27	4	3/4	1 1/4	16	43 3/16	31 15/16	41 15/16
1	100	23	1/2	3 1/2	30 1/4	4	3/4	1 1/4	16	46 7/16	35 3/16	45 3/16
2	128	27	1/2	3 1/2	33 1/4	4	3/4	1 1/4	16	49 7/16	38 3/16	48 3/16
3	166	37	1/2	3 1/2	29 1/4	5 9/16	3/4	1 1/4	16	45 7/16	34 3/16	44 3/16
4	223	40	1/2	3 1/2	31 1/4	5 9/16	3/4	1 1/4	16	47 7/16	36 3/16	46 3/16
5	299	45	1/2	3 1/2	35	5 9/16	3/4	1 1/4	16	51 3/16	39 15/16	49 15/16
6	399	68	5/8	4	34 1/2	6 5/8	7/8	1 1/2	16	50 15/16	39 7/16	49 7/16
7	532	85	5/8	4	37 1/4	6 5/8	7/8	1 1/2	16	53 11/16	42 3/16	52 3/16
8	713	113	5/8	4	40 1/4	6 5/8	7/8	1 1/2	16	56 11/16	45 3/16	55 3/16
9	950	148	3/4	4	39 1/4	8 5/8	7/8	1 3/4	16 1/2	56 7/16	44 11/16	54 11/16
10	1235	190	3/4	4	45	8 5/8	7/8	1 3/4	16 1/2	62 3/16	50 7/16	60 7/16
11	1615	155	3/4	5	36	8 5/8	7/8	1 3/4	16 1/2	53 3/16	41 7/16	51 7/16
12	2138	178	1	5	39 1/4	8 5/8	1 1/2	2 1/4	16 1/2	56 15/16	44 11/16	54 11/16
13	2850	240	1	5	49 1/2	8 5/8	1 1/2	2 1/4	16 1/2	67 3/16	54 15/16	64 15/16
14	3800	256	1 1/4	5	50	8 5/8	1 5/8	2 1/2	17	68 7/16	55 15/16	65 15/16
15	5130	263	1 1/4	5	50	8 5/8	1 5/8	3	17	68 13/16	55 13/16	65 13/16
16	7125	350	1 1/2	6	60	8 5/8	1 3/4	3 1/2	17 3/4	80 1/16	66 9/16	76 9/16
17	9500	452	1 3/4	7	69	8 5/8	2 1/4	4	17 3/4	89 5/16	75 5/16	85 5/16
18	12645	800	2	7	66 1/2	12 3/4	2 1/2	4 9/16	19	88 3/16	73 5/8	83 5/8
19	16805	971	2 1/4	8	75 3/4	12 3/4	3 1/8	5	19	97 7/8	82 7/8	92 7/8
20	22325	1345	2 1/2	9	91 1/2	12 3/4	3 1/8	5 9/16	20	114 1/4	98 11/16	108 11/16
21	29688	1694	2 3/4	9	101 1/2	12 3/4	4 1/8	6 1/4	20 1/2	125 7/16	109 3/16	119 3/16
22	39591	2100	3	9	125 1/2	12 3/4	4 1/2	6 5/8	20 1/2	149 1/2	132 7/8	142 7/8