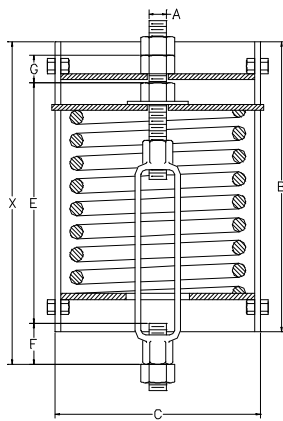
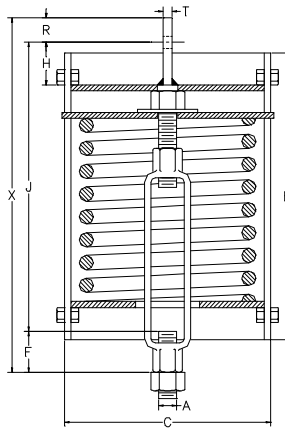


AAA TECHNOLOGY & SPECIALTIES CO., INC.

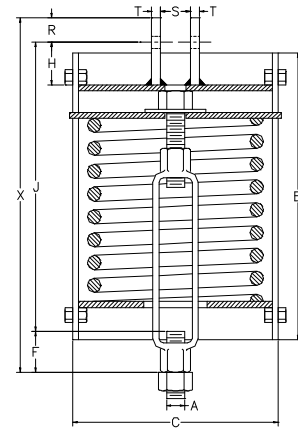
SERIES E268



TYPE A



TYPE B



TYPE C

1. The casing diameters shown for each spring hanger size are for all Types of spring hangers.
2. The casing lengths shown are for Types A, B, C, D, E and G only.
3. All Rod Takeout dimensions shown in the tables for Type A, B and C spring hangers are calculated with the spring hanger at the top of the movement scale.
4. All Minimum Overall Length values shown in the tables for Type A, B and C spring hangers are calculated with the spring hanger at the top of the movement scale. All Maximum Overall Length values shown in the tables for Type A, B and C spring hangers are calculated with the spring hanger at the bottom of the movement scale. To obtain the actual shipping length, add the deflection from the top of the scale to the preset position to the minimum overall length.
5. All Maximum Overall Length values shown in the tables for Type D spring hangers are calculated with the spring hanger at the top of the movement scale. All Minimum Overall Length values shown in the tables for Type D spring hangers are calculated with the spring hanger at the bottom of the movement scale. To obtain the actual shipping length, subtract the deflection from the top of the scale to the preset position from the maximum overall length.

HANGER SIZE	LOAD RATING (LBS)	APRX WT. EACH (LBS)	ROD DIA. A (IN)	R.H. TH'D L'GTH	CASING LENGTH B (IN)	CASING OUTSIDE DIA C (IN)	MIN. TH'D ENGAGE F (IN)	TYPE A	TYPE B & C				ROD TAKE-OUT (IN)		OVERALL LENGTH X (IN)				
								ROD ENGAGE G (IN)	H (IN)	R (IN)	S (IN)	T (IN)	LUG HOLE DIA. (IN)	TYPE A	B & C	TYPE A		TYPES B & C	
														E (IN)	J (IN)	MIN.	MAX	MIN.	MAX
000	19	7	1/2	3 1/2	9	4	3/4	7/8	2 1/4	1 1/4	7/8	1/4	11/16	10 1/2	13 1/8	12 11/16	15 3/16	15 1/4	17 3/4
00	45	8	1/2	3 1/2	9	4	3/4	7/8	2 1/4	1 1/4	7/8	1/4	11/16	10 1/2	13 1/8	12 11/16	15 3/16	15 1/4	17 3/4
0	69	10	1/2	3 1/2	9	4	3/4	7/8	2 1/4	1 1/4	7/8	1/4	11/16	10 1/2	13 1/8	12 11/16	15 3/16	15 1/4	17 3/4
1	100	11	1/2	3 1/2	10	4	3/4	7/8	2 1/4	1 1/4	7/8	1/4	11/16	10 1/2	13 1/8	12 11/16	15 3/16	15 1/4	17 3/4
2	128	12	1/2	3 1/2	10 3/4	4	3/4	7/8	2 1/4	1 1/4	7/8	1/4	11/16	10 1/2	13 1/8	12 11/16	15 3/16	15 1/4	17 3/4
3	166	15	1/2	3 1/2	9 3/4	5 9/16	3/4	7/8	2 1/4	1 1/4	7/8	1/4	11/16	10 1/2	13 1/8	12 11/16	15 3/16	15 1/4	17 3/4
4	223	18	1/2	3 1/2	10 5/8	5 9/16	3/4	7/8	2 1/4	1 1/4	7/8	1/4	11/16	10 1/2	13 1/8	12 11/16	15 3/16	15 1/4	17 3/4
5	299	20	1/2	3 1/2	11	5 9/16	3/4	7/8	2 1/4	1 1/4	7/8	1/4	11/16	10 1/2	13 1/8	12 11/16	15 3/16	15 1/4	17 3/4
6	399	28	5/8	4	11 1/4	6 5/8	7/8	1	2 1/4	1 1/4	1 1/16	1/4	13/16	12	14 5/8	14 3/8	16 7/8	16 3/4	19 1/4
7	532	31	5/8	4	12 1/2	6 5/8	7/8	1	2 1/4	1 1/4	1 1/16	1/4	13/16	12	14 5/8	14 3/8	16 7/8	16 3/4	19 1/4
8	713	33	5/8	4	12 1/2	6 5/8	7/8	1	2 1/4	1 1/4	1 1/16	1/4	13/16	12	14 5/8	14 3/8	16 7/8	16 3/4	19 1/4
9	950	68	3/4	4	13	8 5/8	7/8	1 3/8	2 1/4	1 1/4	1 1/4	3/8	15/16	13 3/8	16 1/4	16	18 1/2	18 3/8	20 7/8
10	1235	74	3/4	4	14 1/4	8 5/8	7/8	1 3/8	2 1/4	1 1/4	1 1/4	3/8	15/16	13 3/8	16 1/4	16	18 1/2	18 3/8	20 7/8
11	1615	70	3/4	5	12	8 5/8	7/8	1 3/8	2 1/4	1 1/4	1 1/4	3/8	15/16	13 3/8	16 1/4	16	18 1/2	18 3/8	20 7/8
12	2138	72	1	5	13	8 5/8	1 1/2	1 5/8	3	1 1/2	1 5/8	1/2	1 1/4	12 1/4	15 7/8	15 1/2	18	18 7/8	21 3/8
13	2850	91	1	5	15 3/4	8 5/8	1 1/2	1 5/8	3	1 1/2	1 5/8	1/2	1 1/4	15 1/4	18 7/8	18 1/2	21	21 7/8	24 3/8
14	3800	96	1 1/4	5	16 5/8	8 5/8	1 5/8	1 7/8	4	2	2	5/8	1 1/2	16 1/2	21 1/8	19 7/8	22 3/8	24 3/4	27 1/4
15	5130	121	1 1/4	5	16 5/8	8 5/8	1 5/8	2 1/8	4	2	2	5/8	1 1/2	16 5/16	21 3/16	20	22 1/2	24 13/16	27 5/16
16	7125	144	1 1/2	6	19 1/2	8 5/8	1 3/4	2 3/8	4	2 1/2	2 3/8	3/4	1 3/4	18 15/16	23 13/16	22 3/4	25 1/4	28 1/16	30 9/16
17	9500	172	1 3/4	7	22 1/2	8 5/8	2 1/4	2 5/8	4	2 1/2	2 5/8	3/4	2	21 1/16	25 15/16	25 5/8	28 1/8	30 11/16	33 3/16
18	12645	336	2	7	23	12 3/4	2 1/2	3 1/8	4	3	2 7/8	3/4	2 3/8	20 15/16	26 1/16	26 7/16	28 15/16	31 9/16	34
19	16805	382	2 1/4	8	25 1/2	12 3/4	3 1/8	3 3/8	4	3	3 1/8	3/4	2 5/8	24 11/16	29 13/16	30 13/16	33 5/16	35 15/16	38 7/16
20	22325	491	2 1/2	9	31 1/2	12 3/4	3 1/8	4 1/8	5	4	3 3/8	3/4	2 7/8	27 9/16	34 3/16	35 1/8	37 5/8	41 5/16	43 13/16
21	29688	502	2 3/4	9	34	12 3/4	4 1/8	4 3/8	5	4	3 5/8	3/4	3 1/8	31 7/16	38 1/16	40	42 1/2	46 3/16	48 11/16
22	39591	724	3	9	40 3/4	12 3/4	4 1/2	4 5/8	6	4	3 7/8	1	3 3/8	34 1/4	41 7/8	43 9/16	46 1/16	50 3/8	52 7/8