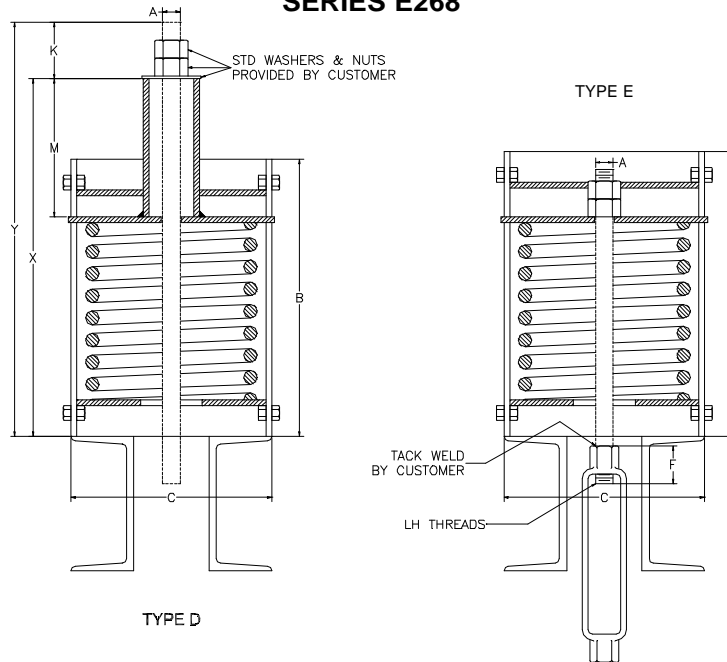


# AAA TECHNOLOGY & SPECIALTIES CO., INC.

## SERIES E268



1. The casing diameters shown for each spring hanger size are for all Types of spring hangers.
2. The casing lengths shown are for Types A, B, C, D, E and G only.
3. All Maximum Overall Length values shown in the tables for Type D spring hangers are calculated with the spring hanger at the top of the movement scale. All Minimum Overall Length values shown in the tables for Type D spring hangers are calculated with the spring hanger at the bottom of the movement scale. To obtain the actual shipping length, subtract the deflection from the top of the scale to the preset position from the maximum overall length.

HANGER SIZE	LOAD RATING (LBS)	APRX WT. EACH (LBS)	ROD DIA. A (IN)	R.H. TH'D L'GTH	CASING LENGTH B (IN)	CASING OUTSIDE DIA C (IN)	MIN. TH'D ENGAGE F (IN)	ALLOW FOR NUTS K (IN)	HEIGHT OF SPACER M (MAX) (IN)	ROD LENGTH Y (IN)	OVERALL LENGTH X (IN)	
											TYPE D	
											MIN.	MAX
000	19	7	1/2	3 1/2	9	4	3/4	1 1/4	3 3/4	12 7/8	9 1/8	11 5/8
00	45	8	1/2	3 1/2	9	4	3/4	1 1/4	3 3/4	12 7/8	9 1/8	11 5/8
0	69	9	1/2	3 1/2	9	4	3/4	1 1/4	3 3/4	12 7/8	9 1/8	11 5/8
1	100	10	1/2	3 1/2	10	4	3/4	1 1/4	3 3/4	13 7/8	10 1/8	12 5/8
2	128	11	1/2	3 1/2	10 3/4	4	3/4	1 1/4	3 3/4	14 5/8	10 7/8	13 3/8
3	166	14	1/2	3 1/2	9 3/4	5 9/16	3/4	1 1/4	3 3/4	13 5/8	9 7/8	12 3/8
4	223	16	1/2	3 1/2	10 5/8	5 9/16	3/4	1 1/4	3 3/4	14 1/2	10 3/4	13 1/4
5	299	18	1/2	3 1/2	11	5 9/16	3/4	1 1/4	3 3/4	14 7/8	11 1/8	13 5/8
6	399	25	5/8	4	11 1/4	6 5/8	7/8	1 1/2	3 3/4	15 3/8	11 3/8	13 7/8
7	532	28	5/8	4	12 1/2	6 5/8	7/8	1 1/2	3 3/4	16 5/8	12 5/8	15 1/8
8	713	30	5/8	4	12 1/2	6 5/8	7/8	1 1/2	3 3/4	16 5/8	12 5/8	15 1/8
9	950	62	3/4	4	13	8 5/8	7/8	1 3/4	4 1/4	17 7/8	13 5/8	16 1/8
10	1235	67	3/4	4	14 1/4	8 5/8	7/8	1 3/4	4 1/4	19 1/8	14 7/8	17 3/8
11	1615	63	3/4	5	12	8 5/8	7/8	1 3/4	4 1/4	16 7/8	12 5/8	15 1/8
12	2138	64	1	5	13	8 5/8	1 1/2	2 1/4	4 1/4	18 3/8	13 5/8	16 1/8
13	2850	82	1	5	15 3/4	8 5/8	1 1/2	2 1/4	4 1/4	21 1/8	16 3/8	18 7/8
14	3800	86	1 1/4	5	16 5/8	8 5/8	1 5/8	2 1/2	4 3/4	22 3/4	17 3/4	20 1/4
15	5130	109	1 1/4	5	16 5/8	8 5/8	1 5/8	3	4 3/4	23 3/16	17 11/16	20 3/16
16	7125	130	1 1/2	6	19 1/2	8 5/8	1 3/4	3 1/2	6	27 13/16	21 13/16	24 5/16
17	9500	155	1 3/4	7	22 1/2	8 5/8	2 1/4	4	6	31 1/16	24 9/16	27 1/16
18	12645	302	2	7	23	12 3/4	2 1/2	4 9/16	7	32 11/16	25 5/8	28 1/8
19	16805	344	2 1/4	8	25 1/2	12 3/4	3 1/8	5	7	35 5/8	28 1/8	30 5/8
20	22325	440	2 1/2	9	31 1/2	12 3/4	3 1/8	5 9/16	8	42 1/4	34 3/16	36 11/16
21	29688	452	2 3/4	9	34	12 3/4	4 1/8	6 1/4	8 1/2	45 15/16	37 3/16	39 11/16
22	39591	651	3	9	40 3/4	12 3/4	4 1/2	6 5/8	8 1/2	52 3/4	43 5/8	46 1/8