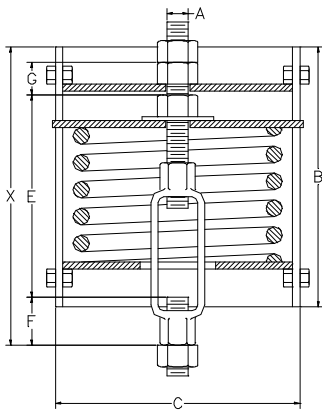
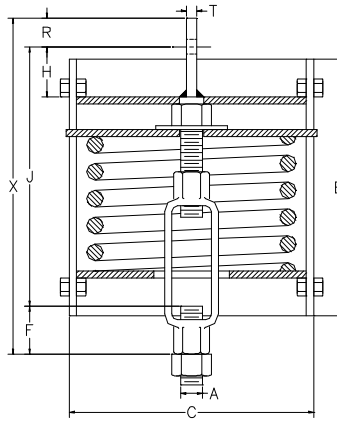


AAA TECHNOLOGY & SPECIALTIES CO., INC.

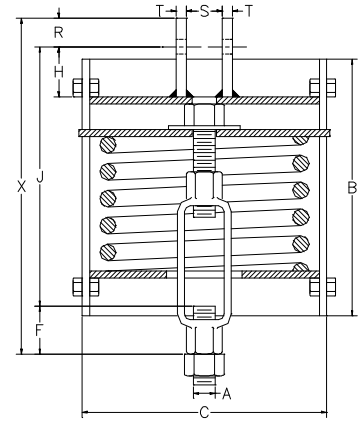
SERIES E82



TYPE A



TYPE B



TYPE C

1. The casing diameters shown for each spring hanger size are for all Types of spring hangers.
2. The casing lengths shown are for Types A, B, C, D, E and G only.
3. All Rod Takeout dimensions shown in the tables for Type A, B and C spring hangers are calculated with the spring hanger at the top of the movement scale.
4. All Minimum Overall Length values shown in the tables for Type A, B and C spring hangers are calculated with the spring hanger at the top of the movement scale. All Maximum Overall Length values shown in the tables for Type A, B and C spring hangers are calculated with the spring hanger at the bottom of the movement scale. To obtain the actual shipping length, add the deflection from the top of the scale to the preset position to the minimum overall length.
5. All Maximum Overall Length values shown in the tables for Type D spring hangers are calculated with the spring hanger at the top of the movement scale. All Minimum Overall Length values shown in the tables for Type D spring hangers are calculated with the spring hanger at the bottom of the movement scale. To obtain the actual shipping length, subtract the deflection from the top of the scale to the preset position from the maximum overall length.

HANGER SIZE	LOAD RATING (LBS)	APRX WT. EACH (LBS)	ROD DIA. A (IN)	R.H. TH'D L'GTH	CASING LENGTH B (IN)	CASING OUTSIDE DIA. C (IN)	MIN. TH'D ENGAGE F (IN)	TYPE B & C					ROD TAKE-OUT (IN)		OVERALL LENGTH X (IN)				
								TYPE A ROD ENGAGE G (IN)	H (IN)	R (IN)	S (IN)	T (IN)	LUG HOLE DIA. (IN)	TYPE A		TYPES B & C			
														E (IN)	J (IN)	MIN.	MAX	MIN.	MAX
0	69	8	1/2	3 1/2	7 1/8	4	3/4	7/8	2 1/4	1 1/4	7/8	1/4	11/16	8 1/4	10 3/4	10 5/16	11 9/16	12 3/4	14
1	100	9	1/2	3 1/2	7 1/8	4	3/4	7/8	2 1/4	1 1/4	7/8	1/4	11/16	8 1/4	10 3/4	10 5/16	11 9/16	12 3/4	14
2	128	10	1/2	3 1/2	7 3/4	4	3/4	7/8	2 1/4	1 1/4	7/8	1/4	11/16	8 1/4	10 3/4	10 5/16	11 9/16	12 3/4	14
3	166	12	1/2	3 1/2	7 1/2	5 9/16	3/4	7/8	2 1/4	1 1/4	7/8	1/4	11/16	8 1/4	10 3/4	10 5/16	11 9/16	12 3/4	14
4	223	14	1/2	3 1/2	7 1/2	5 9/16	3/4	7/8	2 1/4	1 1/4	7/8	1/4	11/16	8 1/4	10 3/4	10 5/16	11 9/16	12 3/4	14
5	299	15	1/2	3 1/2	8	5 9/16	3/4	7/8	2 1/4	1 1/4	7/8	1/4	11/16	8 1/4	10 3/4	10 5/16	11 9/16	12 3/4	14
6	399	22	5/8	4	8 1/4	6 5/8	7/8	1	2 1/4	1 1/4	1 1/16	1/4	13/16	9	11 5/8	11 3/8	12 5/8	13 3/4	15
7	532	26	5/8	4	9	6 5/8	7/8	1	2 1/4	1 1/4	1 1/16	1/4	13/16	9	11 5/8	11 3/8	12 5/8	13 3/4	15
8	713	27	5/8	4	9	6 5/8	7/8	1	2 1/4	1 1/4	1 1/16	1/4	13/16	9	11 5/8	11 3/8	12 5/8	13 3/4	15
9	950	57	3/4	4	9 3/4	8 5/8	7/8	1 3/8	2 1/4	1 1/4	1 1/4	3/8	15/16	9 7/8	12 3/4	12 1/2	13 3/4	14 7/8	16 1/8
10	1235	64	3/4	4	10 5/8	8 5/8	7/8	1 3/8	2 1/4	1 1/4	1 1/4	3/8	15/16	9 7/8	12 3/4	12 1/2	13 3/4	14 7/8	16 1/8
11	1615	58	3/4	5	9	8 5/8	7/8	1 3/8	2 1/4	1 1/4	1 1/4	3/8	15/16	9 7/8	12 3/4	12 1/2	13 3/4	14 7/8	16 1/8
12	2138	60	1	5	9 3/4	8 5/8	1 1/2	1 5/8	3	1 1/2	1 5/8	1/2	1 1/4	9 3/4	13 3/8	13	14 1/4	16 3/8	17 5/8
13	2850	72	1	5	11 1/4	8 5/8	1 1/2	1 5/8	3	1 1/2	1 5/8	1/2	1 1/4	9 3/4	13 3/8	13	14 1/4	16 3/8	17 5/8
14	3800	77	1 1/4	5	12	8 5/8	1 5/8	1 7/8	4	2	2	5/8	1 1/2	11 1/2	16 1/4	14 7/8	16 1/8	19 3/4	21
15	5130	92	1 1/4	5	12	8 5/8	1 5/8	2 1/8	4	2	2	5/8	1 1/2	11 5/16	16 3/16	15	16 1/4	19 13/16	21
16	7125	106	1 1/2	6	14 1/4	8 5/8	1 3/4	2 3/8	4	2 1/2	2 3/8	3/4	1 3/4	13 15/16	18 13/16	17 3/4	19	23 1/16	24 5/16
17	9500	128	1 3/4	7	16 1/4	8 5/8	2 1/4	2 5/8	4	2 1/2	2 5/8	3/4	2	15 9/16	20 7/16	20 1/8	21 3/8	25 3/16	26 7/16
18	12645	262	2	7	18	12 3/4	2 1/2	3 1/8	4	3	2 7/8	3/4	2 3/8	15 7/8	21	21 3/8	22 5/8	26 1/2	27 3/4
19	16805	288	2 1/4	8	19	12 3/4	3 1/8	3 3/8	4	3	3 1/8	3/4	2 5/8	17 5/8	22 3/4	23 3/4	25	28 7/8	30 1/8
20	22325	361	2 1/2	9	24	12 3/4	3 1/8	4 1/8	5	4	3 3/8	3/4	2 7/8	19 9/16	26 3/16	27 1/8	28 3/8	33 5/16	34 9/16
21	29688	408	2 3/4	9	24 3/4	12 3/4	4 1/8	4 3/8	5	4	3 5/8	3/4	3 1/8	22 7/16	29 1/16	31	32 1/4	37 3/16	38 7/16
22	39591	515	3	9	29 1/2	12 3/4	4 1/2	4 5/8	6	4	3 7/8	1	3 3/8	27 1/4	34 7/8	36 1/2	37 3/4	43 3/8	44 5/8