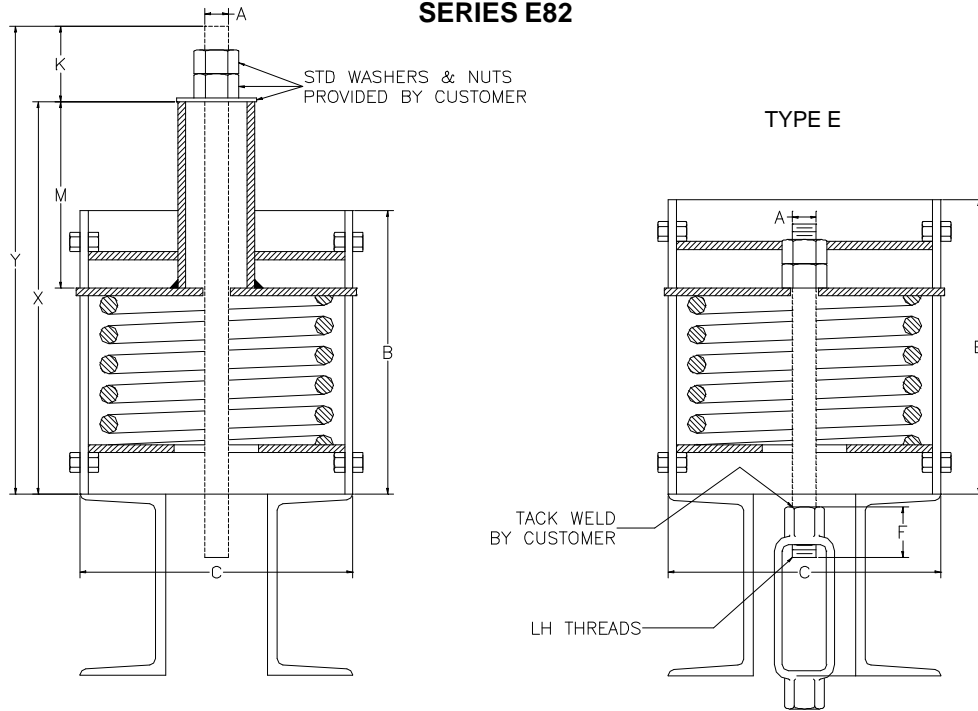


# AAA TECHNOLOGY & SPECIALTIES CO., INC.

## SERIES E82



### TYPE D

1. The casing diameters shown for each spring hanger size are for all Types of spring hangers.
2. The casing lengths shown are for Types A, B, C, D, E and G only.
3. All Maximum Overall Length values shown in the tables for Type D spring hangers are calculated with the spring hanger at the top of the movement scale. All Minimum Overall Length values shown in the tables for Type D spring hangers are calculated with the spring hanger at the bottom of the movement scale. To obtain the actual shipping length, subtract the deflection from the top of the scale to the preset position from the maximum overall length.

HANGER SIZE	LOAD RATING (LBS)	APRX WT. EACH (LBS)	ROD DIA. A (IN)	R.H. TH'D L'GTH	CASING LENGTH B (IN)	CASING OUTSIDE DIA C (IN)	MIN. TH'D ENGAGE F (IN)	ALLOW FOR NUTS K (IN)	HEIGHT OF SPACER M (MAX) (IN)	ROD LENGTH Y (MAX) (IN)	OVERALL LENGTH X (IN)	
											TYPE D	
											MIN.	MAX
0	69	7	1/2	3 1/2	7 1/8	4	3/4	1 1/4	3 3/4	11	8 1/2	9 3/4
1	100	8	1/2	3 1/2	7 1/8	4	3/4	1 1/4	3 3/4	11	8 1/2	9 3/4
2	128	9	1/2	3 1/2	7 3/4	4	3/4	1 1/4	3 3/4	11 5/8	9 1/8	10 3/8
3	166	11	1/2	3 1/2	7 1/2	5 9/16	3/4	1 1/4	3 3/4	11 3/8	8 7/8	10 1/8
4	223	13	1/2	3 1/2	7 1/2	5 9/16	3/4	1 1/4	3 3/4	11 3/8	8 7/8	10 1/8
5	299	14	1/2	3 1/2	8	5 9/16	3/4	1 1/4	3 3/4	11 7/8	9 3/8	10 5/8
6	399	20	5/8	4	8 1/4	6 5/8	7/8	1 1/2	3 3/4	12 3/8	9 5/8	10 7/8
7	532	24	5/8	4	9	6 5/8	7/8	1 1/2	3 3/4	13 1/8	10 3/8	11 5/8
8	713	25	5/8	4	9	6 5/8	7/8	1 1/2	3 3/4	13 1/8	10 3/8	11 5/8
9	950	52	3/4	4	9 3/4	8 5/8	7/8	1 3/4	4 1/4	14 5/8	11 5/8	12 7/8
10	1235	58	3/4	4	10 5/8	8 5/8	7/8	1 3/4	4 1/4	15 1/2	12 1/2	13 3/4
11	1615	53	3/4	5	9	8 5/8	7/8	1 3/4	4 1/4	14	10 15/16	12 3/16
12	2138	55	1	5	9 3/4	8 5/8	1 1/2	2 1/4	4 1/4	15 1/8	11 5/8	12 7/8
13	2850	67	1	5	11 1/4	8 5/8	1 1/2	2 1/4	4 1/4	16 5/8	13 1/8	14 3/8
14	3800	72	1 1/4	5	12	8 5/8	1 5/8	2 1/2	4 3/4	18 1/8	14 3/8	15 5/8
15	5130	83	1 1/4	5	12	8 5/8	1 5/8	3	4 3/4	18 9/16	14 5/16	15 9/16
16	7125	96	1 1/2	6	14 1/4	8 5/8	1 3/4	3 1/2	6	22 9/16	17 13/16	19 1/16
17	9500	111	1 3/4	7	16 1/4	8 5/8	2 1/4	4	6	24 13/16	19 9/16	20 13/16
18	12645	237	2	7	18	12 3/4	2 1/2	4 9/16	7	27 11/16	21 7/8	23 1/8
19	16805	259	2 1/4	8	19	12 3/4	3 1/8	5	7	29 1/8	22 7/8	24 1/8
20	22325	325	2 1/2	9	24	12 3/4	3 1/8	5 9/16	8	34 3/4	27 15/16	29 3/16
21	29688	363	2 3/4	9	24 3/4	12 3/4	4 1/8	6 1/4	8 1/2	36 11/16	29 3/16	30 7/16
22	39591	455	3	9	29 1/2	12 3/4	4 1/2	6 5/8	8 1/2	41 1/2	33 5/8	34 7/8