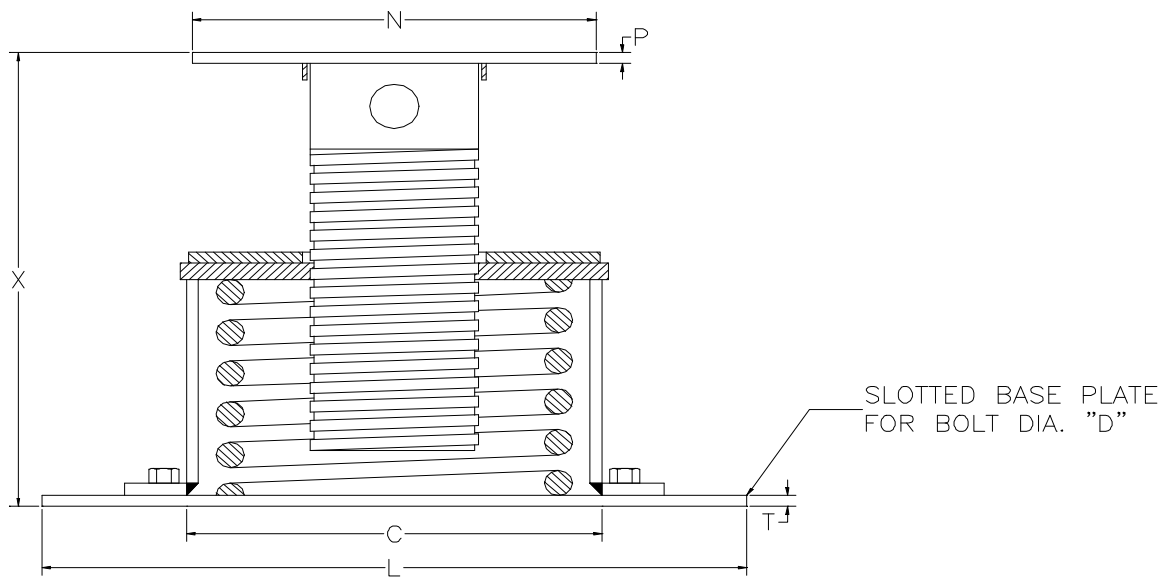


AAA TECHNOLOGY & SPECIALTIES CO., INC.

SERIES E82



TYPE F

1. The casing diameters shown for each spring hanger size are for all Types of spring hangers.
2. The casing lengths shown are for Types A, B, C, D, E and G only.
3. The installed lengths are given for the mid range load settings.
4. Guided load columns are available for cases where significant lateral loads are applied to the spring hanger.
5. When significant lateral loads are applied to the spring hanger, low friction load bearings can be adhered to the load flange and the mating member above the load flange or a roller can be used to allow pipe movement.
6. Extended load columns are available where taller installed lengths are required.

HANGER SIZE	LOAD RATING (LBS)	WEIGHT APPROX EACH (LBS)	CASING OUTSIDE DIA C (IN)	BASE PLATE					INSTALLED HT. X		LOAD COLUMN DIA. (IN)	LOAD FLANGE	
				SQUARE L (IN)	THK. T (IN)	BOLT CIRCLE		BOLT DIA. D (IN)	MIN. (IN)	MAX. (IN)		SQUARE N (IN)	THK. (IN)
						MIN. (IN)	MAX. (IN)						
0	69	12	4	7 1/2	1/4	7	8 3/4	5/8	6 1/4	6 3/4	1.9	4	3/16
1	100	12	4	7 1/2	1/4	7	8 3/4	5/8	6 1/2	7	1.9	4	3/16
2	128	13	4	7 1/2	1/4	7	8 3/4	5/8	7 1/8	7 5/8	1.9	4	3/16
3	166	21	5 9/16	7 1/2	1/4	7 3/4	8 3/4	3/4	6 11/16	7 3/16	2 7/8	5	3/16
4	223	22	5 9/16	7 1/2	1/4	7 3/4	8 3/4	3/4	7 1/16	7 9/16	2 7/8	5	3/16
5	299	23	5 9/16	7 1/2	1/4	7 3/4	8 3/4	3/4	7 7/16	7 15/16	2 7/8	5	3/16
6	399	35	6 5/8	9	3/8	8	10 7/8	3/4	7 3/4	8 1/4	2 7/8	6	1/4
7	532	38	6 5/8	9	3/8	8	10 7/8	3/4	8 3/8	8 7/8	2 7/8	6	1/4
8	713	39	6 5/8	9	3/8	8	10 7/8	3/4	8 5/8	9 1/8	2 7/8	6	1/4
9	950	81	8 5/8	13 1/4	1/2	10 9/16	16 1/2	3/4	9 13/16	10 13/16	4 1/2	8	1/2
10	1235	84	8 5/8	13 1/4	1/2	10 9/16	16 1/2	3/4	10 5/16	11 5/16	4 1/2	8	1/2
11	1615	80	8 5/8	13 1/4	1/2	10 9/16	16 1/2	3/4	9	10	4 1/2	8	1/2
12	2138	81	8 5/8	13 1/4	1/2	10 9/16	16 1/2	3/4	9 5/16	10 5/16	4 1/2	8	1/2
13	2850	82	8 5/8	13 1/4	1/2	10 9/16	16 1/2	3/4	10 11/16	11 11/16	4 1/2	8	1/2
14	3800	93	8 5/8	13 1/4	1/2	10 9/16	16 1/2	3/4	10 15/16	11 15/16	4 1/2	8	1/2
15	5130	104	8 5/8	13 1/4	1/2	10 9/16	16 1/2	3/4	11 3/16	12 3/16	4 1/2	8	1/2
16	7125	116	8 5/8	13 1/4	1/2	10 9/16	16 1/2	3/4	12 7/16	13 7/16	4 1/2	8	1/2
17	9500	131	8 5/8	13 1/4	1/2	10 9/16	16 1/2	3/4	13 11/16	14 11/16	4 1/2	8	1/2
18	12645	272	12 3/4	17 1/4	5/8	15 3/4	22	3/4	14 5/16	15 5/16	5 9/16	12	1/2
19	16805	278	12 3/4	17 1/4	5/8	15 3/4	22	3/4	15 5/16	16 5/16	5 9/16	12	1/2
20	22325	352	12 3/4	17 1/4	5/8	15 3/4	22	3/4	17 7/16	18 7/16	5 9/16	12	1/2
21	29688	356	12 3/4	17 1/4	5/8	15 3/4	22	3/4	18 1/2	19 1/2	5 9/16	12	1/2
22	39591	448	12 3/4	17 1/4	5/8	15 3/4	22	3/4	22 3/4	23 3/4	5 9/16	12	1/2