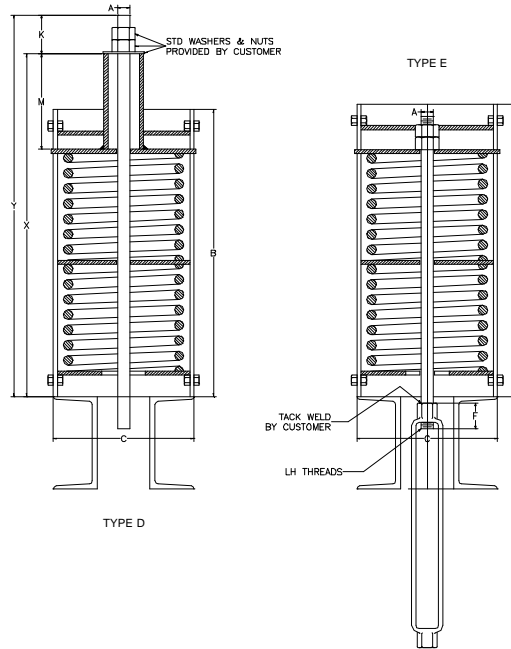


AAA TECHNOLOGY & SPECIALTIES CO., INC.

SERIES E98



1. The casing diameters shown for each spring hanger size are for all Types of spring hangers.
2. The casing lengths shown are for Types A, B, C, D, E and G only.
3. All Maximum Overall Length values shown in the tables for Type D spring hangers are calculated with the spring hanger at the top of the movement scale. All Minimum Overall Length values shown in the tables for Type D spring hangers are calculated with the spring hanger at the bottom of the movement scale. To obtain the actual shipping length, subtract the deflection from the top of the scale to the preset position from the maximum overall length.

HANGER SIZE	LOAD RATING (LBS)	APRX WT. EACH (LBS)	ROD DIA. A (IN)	R.H. TH'D L'GTH	CASING LENGTH B (IN)	CASING OUTSIDE DIA C (IN)	MIN. TH'D ENGAGE F (IN)	ALLOW FOR NUTS K (IN)	HEIGHT OF SPACER M (MAX) (IN)	ROD LENGTH Y (MAX) (IN)	OVERALL LENGTH X (IN)	
											TYPE D	
											MIN.	MAX
000	19	12	1/2	3 1/2	15	4	3/4	1 1/4	9	24 1/8	17 7/8	22 7/8
00	45	13	1/2	3 1/2	15	4	3/4	1 1/4	9	24 1/8	17 7/8	22 7/8
0	69	14	1/2	3 1/2	15	4	3/4	1 1/4	9	24 1/8	17 7/8	22 7/8
1	100	15	1/2	3 1/2	16 3/4	4	3/4	1 1/4	9	25 7/8	19 5/8	24 5/8
2	128	17	1/2	3 1/2	18 1/4	4	3/4	1 1/4	9	27 3/8	21 1/8	26 1/8
3	166	23	1/2	3 1/2	16 1/4	5 9/16	3/4	1 1/4	9	25 3/8	19 1/8	24 1/8
4	223	25	1/2	3 1/2	17 1/2	5 9/16	3/4	1 1/4	9	26 5/8	20 3/8	25 3/8
5	299	28	1/2	3 1/2	19	5 9/16	3/4	1 1/4	9	28 1/8	21 7/8	26 7/8
6	399	41	5/8	4	19	6 5/8	7/8	1 1/2	9	28 3/8	21 7/8	26 7/8
7	532	49	5/8	4	20 3/4	6 5/8	7/8	1 1/2	9	30 1/8	23 5/8	28 5/8
8	713	61	5/8	4	21 3/4	6 5/8	7/8	1 1/2	9	31 1/8	24 5/8	29 5/8
9	950	95	3/4	4	21 3/4	8 5/8	7/8	1 3/4	9 1/2	31 7/8	25 1/8	30 1/8
10	1235	109	3/4	4	24 1/2	8 5/8	7/8	1 3/4	9 1/2	34 5/8	27 7/8	32 7/8
11	1615	94	3/4	5	20	8 5/8	7/8	1 3/4	9 1/2	30 1/8	23 3/8	28 3/8
12	2138	101	1	5	21 3/4	8 5/8	1 1/2	2 1/4	9 1/2	32 3/8	25 1/8	30 1/8
13	2850	136	1	5	27	8 5/8	1 1/2	2 1/4	9 1/2	37 5/8	30 3/8	35 3/8
14	3800	142	1 1/4	5	27 3/4	8 5/8	1 5/8	2 1/2	10	39 1/8	31 5/8	36 5/8
15	5130	164	1 1/4	5	27 3/4	8 5/8	1 5/8	3	10	39 9/16	31 9/16	36 9/16
16	7125	208	1 1/2	6	33	8 5/8	1 3/4	3 1/2	11	46 5/16	37 13/16	42 13/16
17	9500	262	1 3/4	7	38	8 5/8	2 1/4	4	11	51 9/16	42 9/16	47 9/16
18	12645	467	2	7	37 1/2	12 3/4	2 1/2	4 9/16	13	53 3/16	43 5/8	48 5/8
19	16805	553	2 1/4	8	42 1/4	12 3/4	3 1/8	5	13	58 3/8	48 3/8	53 3/8
20	22325	735	2 1/2	9	51 1/2	12 3/4	3 1/8	5 9/16	14	68 1/4	57 11/16	62 11/16
21	29688	855	2 3/4	9	56 1/2	12 3/4	4 1/8	6 1/4	14 1/2	74 7/16	63 3/16	68 3/16
22	39591	1109	3	9	69	12 3/4	4 1/2	6 5/8	14 1/2	87	75 3/8	80 3/8