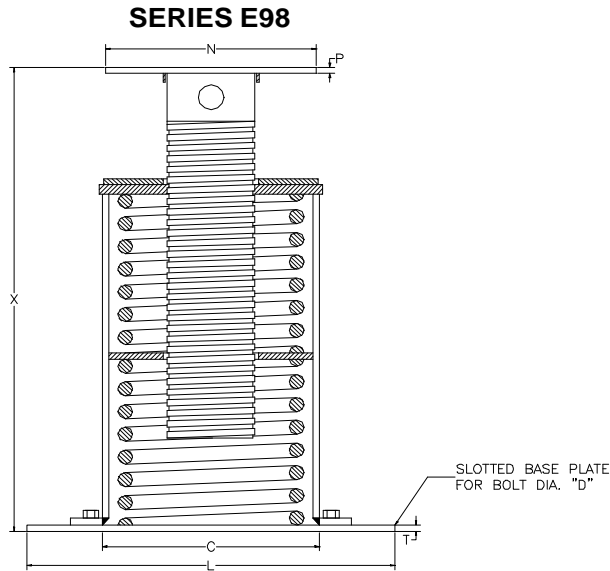


AAA TECHNOLOGY & SPECIALTIES CO., INC.



TYPE F

1. The casing diameters shown for each spring hanger size are for all Types of spring hangers.
2. The casing lengths shown are for Types A, B, C, D, E and G only.
3. The installed lengths are given for the mid range load settings.
4. Guided load columns are available for cases where significant lateral loads are applied to the spring hanger.
5. When significant lateral loads are applied to the spring hanger, low friction load bearings can be adhered to the load flange and the mating member above the load flange or a roller can be used to allow pipe movement.
6. Extended load columns are available where taller installed lengths are required.

HANGER SIZE	LOAD RATING (LBS)	WEIGHT APPROX EACH (LBS)	CASING OUTSIDE DIA C (IN)	BASE PLATE					INSTALLED HT. X		LOAD COLUMN DIA. (IN)	LOAD FLANGE	
				SQUARE L (IN)	THK. T (IN)	BOLT CIRCLE		BOLT DIA. D (IN)	MIN. (IN)	MAX. (IN)		SQUARE N (IN)	THK. (IN)
						MIN. (IN)	MAX. (IN)						
000	19	19	4	7 1/2	1/4	7	8 3/4	5/8	12 15/16	17 15/16	1.9	4	3/16
00	45	20	4	7 1/2	1/4	7	8 3/4	5/8	12 15/16	17 15/16	1.9	4	3/16
0	69	22	4	7 1/2	1/4	7	8 3/4	5/8	12 15/16	17 15/16	1.9	4	3/16
1	100	24	4	7 1/2	1/4	7	8 3/4	5/8	14 5/8	19 5/8	1.9	4	3/16
2	128	26	4	7 1/2	1/4	7	8 3/4	5/8	16 1/8	21 1/8	1.9	4	3/16
3	166	37	5 9/16	7 1/2	1/4	7 3/4	8 3/4	3/4	14 5/16	19 5/16	2 7/8	5	3/16
4	223	41	5 9/16	7 1/2	1/4	7 3/4	8 3/4	3/4	15 9/16	20 4/7	2 7/8	5	3/16
5	299	45	5 9/16	7 1/2	1/4	7 3/4	8 3/4	3/4	16 15/16	22	2 7/8	5	3/16
6	399	66	6 5/8	9	3/8	8	10 7/8	3/4	17 1/8	22 1/8	2 7/8	6	1/4
7	532	79	6 5/8	9	3/8	8	10 7/8	3/4	19 1/16	24	2 7/8	6	1/4
8	713	80	6 5/8	9	3/8	8	10 7/8	3/4	20	25	2 7/8	6	1/4
9	950	140	8 5/8	13 1/4	1/2	10 9/16	16 1/2	3/4	20 3/4	25 3/4	4 1/2	8	1/2
10	1235	154	8 5/8	13 1/4	1/2	10 9/16	16 1/2	3/4	23 3/16	28 1/5	4 1/2	8	1/2
11	1615	140	8 5/8	13 1/4	1/2	10 9/16	16 1/2	3/4	18 13/16	23 4/5	4 1/2	8	1/2
12	2138	148	8 5/8	13 1/4	1/2	10 9/16	16 1/2	3/4	20 1/16	25 1/16	4 1/2	8	1/2
13	2850	190	8 5/8	13 1/4	1/2	10 9/16	16 1/2	3/4	25 3/16	30 1/5	4 1/2	8	1/2
14	3800	194	8 5/8	13 1/4	1/2	10 9/16	16 1/2	3/4	25 7/16	30 4/9	4 1/2	8	1/2
15	5130	206	8 5/8	13 1/4	1/2	10 9/16	16 1/2	3/4	25 9/16	30 9/16	4 1/2	8	1/2
16	7125	246	8 5/8	13 1/4	1/2	10 9/16	16 1/2	3/4	30 3/16	35 1/5	4 1/2	8	1/2
17	9500	292	8 5/8	13 1/4	1/2	10 9/16	16 1/2	3/4	34 5/16	39 1/3	4 1/2	8	1/2
18	12645	558	12 3/4	17 1/4	5/8	15 3/4	22	3/4	33 1/16	38 1/16	5 9/16	12	1/2
19	16805	632	12 3/4	17 1/4	5/8	15 3/4	22	3/4	37 9/16	42 4/7	5 9/16	12	1/2
20	22325	822	12 3/4	17 1/4	5/8	15 3/4	22	3/4	44 1/16	49	5 9/16	12	1/2
21	29688	890	12 3/4	17 1/4	5/8	15 3/4	22	3/4	48 7/8	53 7/8	5 9/16	12	1/2
22	39591	1140	12 3/4	17 1/4	5/8	15 3/4	22	3/4	61	66	5 9/16	12	1/2