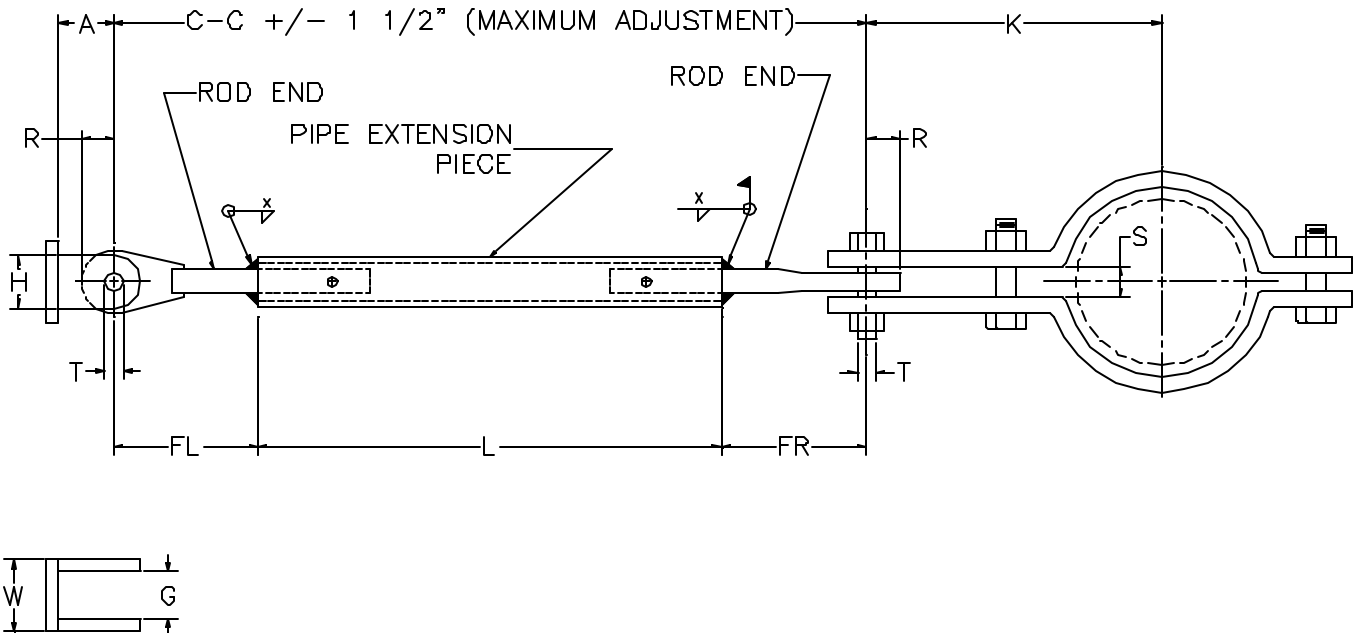


AAA TECHNOLOGY & SPECIALTIES CO., INC.

**FIG. 300
WELDED SWAY STRUT ASSEMBLY**

**SEE NEXT PAGE FOR MORE
DETAILS**



DIMENSIONAL DATA															
SWAY STRUT SIZE	MAX. RATED TENSION LOAD (LBS)	ROD END				EXTENSION PIECE		REAR BRACKET				NOM. PIN/STUD DIA. T (IN)	WELD SIZE X (IN)	C - C LENGTH MIN. (IN)	MAX. ADJUSTMENT (IN)
		DIA. (IN)	PADDLE RADIUS MAX. R (IN)	FL (IN)	FR (IN)	PIPE DIA. (IN)	LENGTH MIN. L (IN)	TAKE OUT A (IN)	H (IN)	W (IN)	GAP (G)				
0	738	1/2	3/4	1 7/8	3 7/8	1/2 XS	10 1/4	1 1/4	1 1/4	1 1/4	9/16	3/8	1/8	16	2
1/2	1434	3/4	1	2 1/4	4 1/4	1 S160	10 1/2	1 3/4	1 1/2	1 1/4	21/32	1/2	1/4	17	2
1	5950	1	1 3/8	2 5/8	4 5/8	1/4 S160	11	2 1/4	2	1 1/2	25/32	5/8	1/4	18 1/4	2
2	9750	1 1/4	1 1/2	2 13/16	4 13/16	1/2 S160	11 3/4	2 1/2	2 1/4	2	29/32	3/4	9/32	19 3/8	2
3	11900	1 1/2	1 1/2	2 15/16	5 7/16	2 XXS	13	2 3/4	2 5/8	2 1/4	1 1/32	1	7/16	21 3/8	2 1/2
4	19350	1 3/4	2 1/4	5 15/16	8 7/16	2 1/2 XXS	13 3/4	3 1/2	3 3/4	3	1 19/32	1 1/4	9/16	28 1/8	2 1/2
5	22800	2	2 1/4	5 3/4	8 3/4	2 1/2 S160	14 3/4	3 1/2	3 3/4	3	1 19/32	1 1/4	3/8	29 1/4	3
6	27600	2 1/4	2 1/2	6 3/4	9 3/4	3 XXS	15 3/4	4 1/2	5	3 3/4	1 25/32	1 1/2	5/8	32 1/4	3
7	40850	2 1/2	3	8 1/16	### ###	3 S160	16 1/2	5	7	7	2 7/32	1 3/4	7/16	36 1/8	3 1/2
8	46200	3	3	8 5/16	#####	4 XXS	18	5	7	7	2 7/32	1 3/4	21/32	38 1/8	3 1/2
9	64400	3 1/2	3 1/4	8 9/16	### ###	4 S120	19 3/4	5 3/4	8	8	2 13/32	2	7/16	40 3/8	3 1/2
10	95950	4 3/4	4 3/4	10 1/2	14	5 XS	23 3/4	7 1/2	10	10	3 7/16	2 3/4	3/8	48 1/4	3 1/2
11	138700	5 3/4	6 5/16	### ###	### ###	6 XS	26 3/4	9 1/2	13	13	4 5/16	3 3/4	7/16	58 1/4	3 1/2