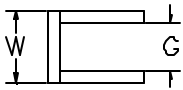
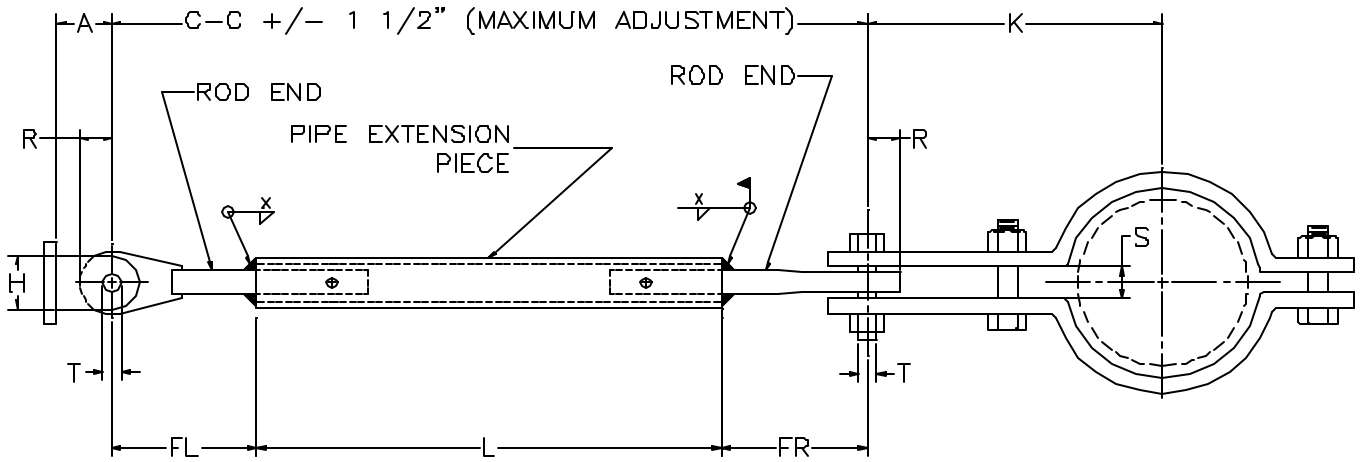


# AAA TECHNOLOGY & SPECIALTIES CO., INC.

**FIG. 301**  
**SHORT WELDED SWAY STRUT ASSEMBLY**



DIMENSIONAL DATA

SWAY STRUT SIZE	MAX. RATED TENSION LOAD (LBS)	DIMENSIONAL DATA												NOM. PIN/STUD DIA. T (IN)	WELD SIZE X (IN)	C - C LENGTH (IN)	
		ROD END				EXTENSION PIECE				REAR BRACKET						MIN	MAX
		DIA. (IN)	PADDLE RADIUS MAX. R (IN)	FL (IN)	FR (IN)	PIPE DIA. (IN)	LENGTH MIN. L (IN)		TAKE OUT A (IN)	H (IN)	W (IN)	GAP (G)					
0	738	1/2	3/4	1 7/8	3 3/8	1/2 XS	3 1/2	10 5/8	1 1/4	1 1/4	1 1/4	9/16	3/8	1/8	8 3/4	15 7/8	
1/2	1434	3/4	1	2 1/4	3 3/4	1 S160	3 1/2	10 7/8	1 3/4	1 1/2	1 1/4	21/32	1/2	1/4	9 1/2	16 7/8	
1	5950	1	1 3/8	2 5/8	4 1/8	1/4 S160	3 1/2	11 3/8	2 1/4	2	1 1/2	25/32	5/8	1/4	10 1/4	18 1/8	
2	9750	1 1/4	1 1/2	2 13/16	4 5/16	1/2 S160	3 1/2	12 1/8	2 1/2	2 1/4	2	29/32	3/4	9/32	10 5/8	19 1/4	
3	11900	1 1/2	1 1/2	2 15/16	4 7/16	2 XXS	3 1/2	13 7/8	2 3/4	2 5/8	2 1/4	1 1/32	1	7/16	10 7/8	21 1/4	
4	19350	1 3/4	2 1/4	5 15/16	7 7/16	2 1/2 XXS	3 1/2	14 5/8	3 1/2	3 3/4	3	1 19/32	1 1/4	9/16	16 7/8	28	
5	22800	2	2 1/4	5 3/4	7 1/4	1/2 S160	3 1/2	16 1/8	3 1/2	3 3/4	3	1 19/32	1 1/4	3/8	16 1/2	29 1/8	
6	27600	2 1/4	2 1/2	6 3/4	8 1/4	3 XXS	3 1/2	17 1/8	4 1/2	5	3 3/4	1 25/32	1 1/2	5/8	18 1/2	32 1/8	
7	40850	2 1/2	3	8 1/16	9 9/16	3 S160	3 1/2	18 3/8	5	7	7	2 7/32	1 3/4	7/16	21 1/8	36	
8	46200	3	3	8 5/16	9 13/16	4 XXS	3 1/2	19 7/8	5	7	7	2 7/32	1 3/4	21/32	21 5/8	38	
9	64400	3 1/2	3 1/4	8 9/16	###	4 S120	3 1/2	21 5/8	5 3/4	8	8	2 13/32	2	7/16	22 1/8	40 1/4	
10	95950	4 3/4	4 3/4	10 1/2	12	5 XS	3 1/2	25 3/4	7 1/2	10	10	3 7/16	2 3/4	3/8	26	48 1/4	
11	138700	5 3/4	6 5/16	###	###	6 XS	3 1/2	28 3/4	9 1/2	13	13	4 5/16	3 3/4	7/16	33 1/8	58 3/8	