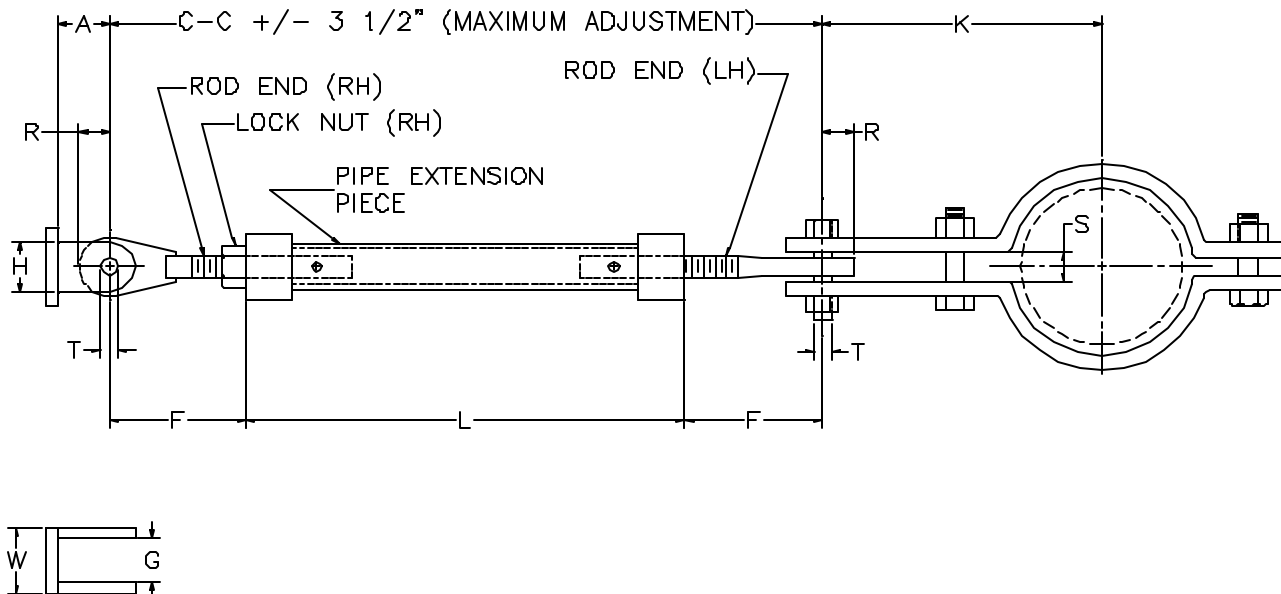


AAA TECHNOLOGY & SPECIALTIES CO., INC.

**FIG. 305
THREADED SWAY STRUT ASSEMBLY**



MAXIMUM RATED COMPRESSION LOAD (KIPS)																		
SWAY STRUT SIZE	C - C																	
	@MIN LENGTH	2'-0"	2'-6"	3'-0"	3'-6"	4'-0"	4'-6"	5'-0"	5'-6"	6'-0"	7'-0"	8'-0"	9'-0"	10'-0"	11'-0"	12'-0"	13'-0"	14'-0"
0	0.738	0.738	0.631	0.477														
1/2	1.434	1.434	1.434	1.434	1.434	1.283	1.033											
1	5.95	5.95	5.95	5.95	5.55	5.151	4.39	3.628	3.121	2.615	1.966							
2	9.75	9.75	9.375	9.75	9.75	9.75	8.825	7.9	6.864	5.829	4.411	3.438	2.818					
3	11.9	11.9	11.9	11.9	11.9	11.9	11.9	11.9	11.9	11.9	10.14	7.965	6.375	5.105	4.105			
4	19.35		19.35	19.35	19.35	19.35	19.35	19.35	19.35	19.35	17.15	14.2	11.55	9.503	7.903	6.703	5.753	5.353
5	22.8			22.8	22.8	22.8	22.8	22.8	22.8	22.8	21.32	17.47	14.02	11.32	9.271	7.671	6.421	5.421

MAXIMUM RATED COMPRESSION LOAD (KIPS)																			
SWAY STRUT SIZE	C - C																		
	@MIN LENGTH	9'-0"	10'-0"	11'-0"	12'-0"	13'-0"	14'-0"	15'-0"	16'-0"	17'-0"	18'-0"	19'-0"	20'-0"	21'-0"	22'-0"	23'-0"	24'-0"	25'-0"	
6	27.6	26.96	22.78	19.08	15.88	13.38	11.38	9.734	8.384	7.184									
7	40.65	38.76	34.06	29.46	25.26	21.46	18.36	15.76	13.66	11.96	10.46	9.16	8.06						
8	46.2	46.2	46.2	42.96	37.91	33.16	28.91	24.96	21.66	18.91	16.56	14.56	12.86	11.36	10.21	9.165			
9	64.4	64.4	64.4	64.4	64.4	63.34	57.54	51.84	46.44	41.54	36.94	32.74	29.04	25.94	23.24	20.84	18.74	16.74	
10	95.95	95.95	95.95	95.95	95.95	95.95	95.95	90.3	83.6	76.9	70.2	63.9	58	52.7	47.6	42.9	38.7	35.1	
11	145.4	145.4	145.4	145.4	145.4	145.4	145.4	145.4	145.4	145.4	145.4	145.4	137.6	129.6	121.6	113.6	105.8	98.47	91.27

INTERPOLATE FOR INTERMEDIATE LENGTHS.

IF NO MAXIMUM RATED COMPRESSION LOAD IS SHOWN, DO NOT USE THE UNIT FOR A COMPRESSIVE LOAD.