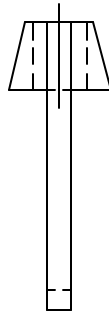
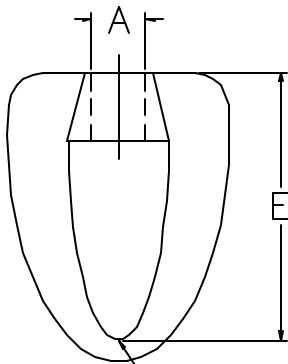
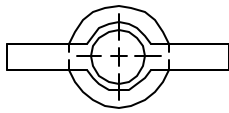


# AAA TECHNOLOGY & SPECIALTIES CO., INC.

**FIG. 421  
EYE SOCKET**



**APPLICATION:** A Fig. 421 Eye Socket is used to join a right hand threaded rod to a pinned connection such as a split ring hanger or various building attachments.

**CONSTRUCTION:** Fig. 421 Eye Sockets are made of malleable iron and are available for rod diameters of 1/4 inch through 7/8 inches.

**FINISHES AVAILABLE:** Black or Electro-Plated.

**ORDERING:** Specify figure number, rod diameter, name and finish, if other than black.

**EXAMPLE:** Fig. 421, 3/4" Eye Socket.

B MAX. BOLT SIZE

PIPE SIZE	ROD SIZE A	B	C	MAX.REC. LOAD LBS.	APPROX. WT./100
1/2 - 2	3/8	1/4	1 - 5/16	570	7
2 1/2 - 3 1/2	1/2	1/4	1 - 1/2	1130	13
4 - 5	5/8	3/8	1 - 3/4	1400	19
6	3/4	1/2	2 - 1/8	1900	31
8	7/8	1/2	2 - 3/8	2200	44