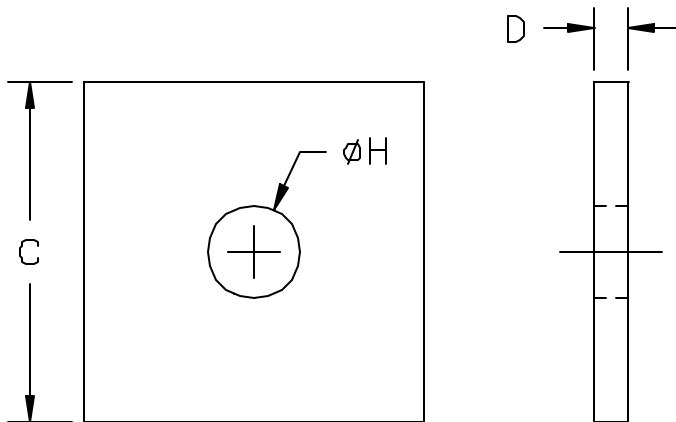


AAA TECHNOLOGY & SPECIALTIES CO., INC.

**FIG. 509
WASHER PLATE**



APPLICATION: Washer Plates are used on back to back channels or angles for supporting pipe with rods or U-Bolts.

CONSTRUCTION: Washer Plates are made of carbon steel with the hole located in the center of the plate.

FINISHES AVAILABLE: Black, Hot Dip Galvanized, Electro-Plated or Painted.

ORDERING: Specify figure number, rod diameter, name and finish, if other than black.

EXAMPLE: Fig. 509, 5/8", Washer Plate

ROD DIA.	C	D	H DIA.	WT. PER 100
3/8	3	1/4	7/16	64
1/2	3	1/4	9/16	63
5/8	3	3/8	11/16	95
3/4	4	3/8	13/16	169
7/8	4	1/2	15/16	227
1	4	1/2	1 1/16	225
1 1/8	4	1/2	1 1/4	223
1 1/4	5	1/2	1 3/8	333
1 1/2	5	5/8	1 5/8	405
1 3/4	5	5/8	1 7/8	393
2	5	5/8	2 1/8	380
2 1/4	6	5/8	2 3/8	560
2 1/2	6	5/8	2 5/8	540
2 3/4	6	5/8	2 7/8	525