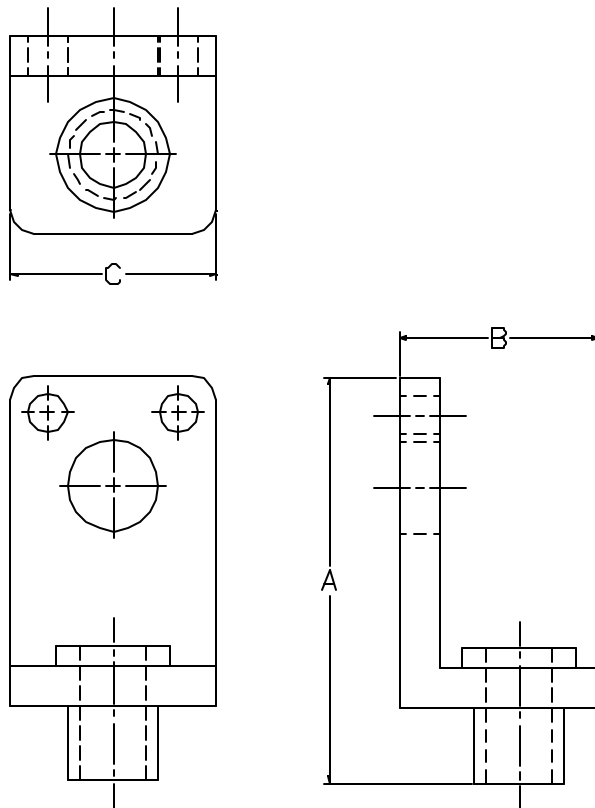


AAA TECHNOLOGY & SPECIALTIES CO., INC.

FIG. 512
THREADED SIDE BEAM BRACKET



APPLICATION: Threaded Side Beam Brackets are used to attach hanger rod to the side of wood, concrete or steel members. Threaded Side Beam Brackets are attached to a support structure by bolting. The offset design allows for virtually unlimited thread adjustment. The rod diameter that can be supported from this bracket is 3/8". To attach the bracket to support member for 1/2" thru 2" pipe, use a 3/8" fastener. To attach the bracket to support member for 2 1/2" thru 4" pipe, use a 1/2" fastener.

CONSTRUCTION: Threaded Side Beam Brackets are cut from carbon steel flat bar with holes centered and punched.

FINISHES AVAILABLE: Black or Electro-Plated.

ORDERING: Specify figure number, name and finish, if other than black.

EXAMPLE: Fig. 512, 2" pipe, Threaded Side Beam Bracket.

U. L. Listed Fastener Table

PIPE SIZE	QTY.	FASTENER TYPE	MATERIAL
2	2	#16x2 Drive Screws	Wood
2	1	3/8 Lag Bolt	Wood
2 - 1/2 - 4	1	1/2 Lag Bolt	Wood
4	2	1/4 x 2 Lag Bolts*	Wood
4	2	1/4 x 1 tek screws	14 guage
4	2	1/4 x 1 tek screws	16 guage
*No pre-drilling required			

PIPE SIZE	ROD SIZE	A	B	C	MAX. REC. LOAD LBS.*	APPROX. WT./100
1/2 thru 4	3/8	2 - 3/4	1 - 1/2	1 - 1/8	300	14
*Safety Factor of 5						