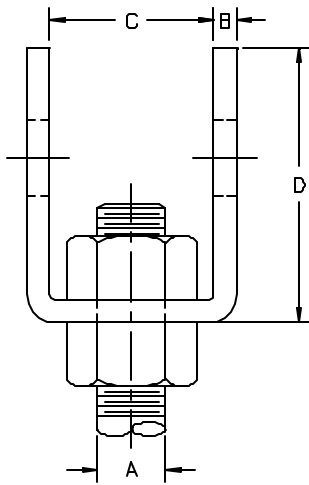


AAA TECHNOLOGY & SPECIALTIES CO., INC.

**FIG. 515
BEAM BRACKET**



APPLICATION: Beam Brackets are designed to provide for the economical attachment of hanger rods to beams regardless of beam size.

CONSTRUCTION: Beam Brackets are manufactured of wrought steel.

FINISHES AVAILABLE: Black, Hot Dip Galvanized, Electro-Plated or Painted.

ORDERING: Specify figure number, rod diameter, name and finish, if other than black.

EXAMPLE: Fig. 515, 7/8", Beam Bracket

DIMENSIONS IN INCHES

ROD SIZE A	MAX. REC. LOAD, LBS.	B	C	D	W	WT. LBS. PER 100
3/8	600	3/8	1 1/4	2 7/8	3	215
1/2	1100	3/8	1 1/4	2 7/8	3	215
5/8	1800	3/8	1 1/4	3	3	215
3/4	2700	3/8	1 1/2	3 1/8	3	230
7/8	3700	1/2	2	4 1/4	3	405
1	4900	1/2	2	4 1/2	4	570
1 1/8	6200	5/8	2 1/4	4 3/4	4	750
1 1/4	8000	5/8	2 1/2	5	5	1010
1 1/2	11600	3/4	3	6 1/2	6	1875
1 3/4	15700	3/4	3 3/4	7 3/4	6	2240
2	20700	3/4	3 3/4	8 1/4	6	2280
2 1/4	27200	3/4	4 1/4	9 1/2	6	2310
2 1/2	33500	3/4	4 1/2	9 3/4	6	2350