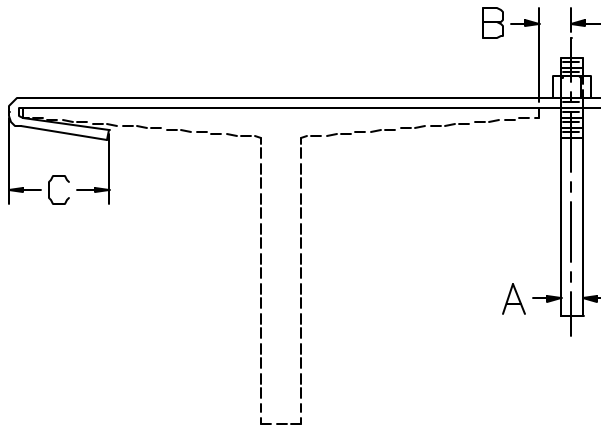


# AAA TECHNOLOGY & SPECIALTIES CO., INC.

**FIG. 545  
TOP BEAM HOOK**



**APPLICATION:** Fig. 545 Top Beam Hooks are recommended for use on the top flange of standard wide flange beams, I-beams, tees and angle trusses. Top Beam Hooks are not recommended where upward movement of the pipe may occur from surge or seismic loading.

**CONSTRUCTION:** A Fig. 545 Top Beam Hook consists of a bent flat bar with a hook on one end and an attachment hole for the support rod in the other end of the flat bar.

**FINISHES AVAILABLE:** Black, Hot Dip Galvanized or Electro-Plated.

**ORDERING:** Specify figure number, type, name and finish, if other than black.

**EXAMPLE:** Fig. 545, 4, Top Beam Hook, HDG.

TYPE	MAX. REC. LOAD (LBS)	A (IN)	B (IN)	C (IN)
1	300	3/8	5/16	1
2	500	1/2	3/8	1
3	700	5/8	7/16	1
4	1000	3/4	1/2	1 1/2
5	2000	7/8	9/16	1 1/2