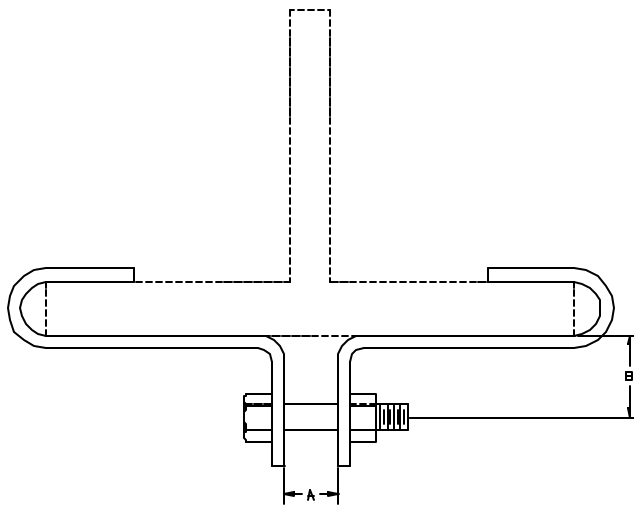


# AAA TECHNOLOGY & SPECIALTIES CO., INC.

**FIG. 551  
CENTER LOAD BEAM CLAMP**



**APPLICATION:** Fig. 551 Center Load Beam Clamps are recommended for use in suspending hanger rods from the center of an overhead support beam.

**CONSTRUCTION:** A Fig. 551 Center Load Beam Clamp consists of two bent flat bars as shown in the diagram above. One end of each flat bar is hooked and the other is bent and a hole is punched in the flat bar. Both bent flat bars are attached with a support bolt and hex nut to which a hanger rod can be attached.

**FINISHES AVAILABLE:** Black, Hot Dip Galvanized or Electro-Plated.

**ORDERING:** Specify figure number, type, width of flange, name and finish, if other than black.

**EXAMPLE:** Fig. 551, type 4, Flange width = 8", Center Load Beam Clamp, HDG.

TYPE	MAX. REC. LOAD (LBS)	A (IN)	B* (IN)	BOLT DIA. D (IN)
1	1000	1/2	1 3/8	3/8
2	1250	1/2	1 3/8	1/2
3	1500	5/8	1 9/16	1/2
4	3000	3/4	2 1/4	5/8
5	3250	3/4	2 1/4	5/8
6	3500	3/4	2 5/16	3/4

\*Not applicable for type 1-2" and type 3-2" flange widths.

FLANGE WIDTH (IN)	MAX. FLANGE THK. (IN)	APPROX. WT. PER 100 (LBS)					
		TYPE 1	TYPE 2	TYPE 3	TYPE 4	TYPE 5	TYPE 6
2	7/16	66	85	-	-	-	-
3	1/2*	75	95	151	355*	-	-
4	1/2	91	114	163	382	470	634
5	5/8	100	125	187	435	536	667
6	3/4	115	143	216	452	558	728
7	7/8	129	160	242	484	606	767
8	7/8	144	177	267	510	659	861
9	1	159	196	295	583	721	913
10	1	172	210	319	625	773	982
11	1	185	227	343	667	826	1048
12	1	198	243	367	709	879	1115

\*Maximum flange thickness type 1, 2, and 3 = 7/16"