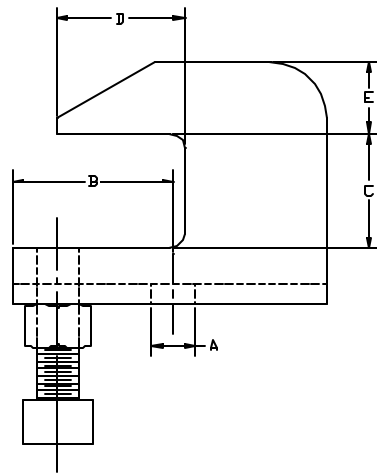
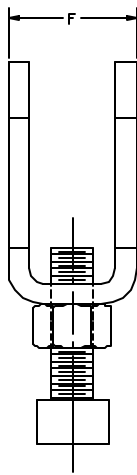


AAA TECHNOLOGY & SPECIALTIES CO., INC.

FIG. 557
STEEL REVERSIBLE "C" CLAMP W/ LOCK NUT (3/4" OPENING)



APPLICATION: Reversible C-Type Beam Clamps with Locknuts are used to mechanically attach hanger rods to supporting structural members where the welding of Beam Brackets or Side Beam Brackets is not desired or allowed. The structural member may be I beams, wide flange beams, channels, tees or angles where the thickness does not exceed 3/4". The locking nut when tightened prevents loosening of the "set screw" from vibration. In piping systems where vibration is of a concern, the Reversible C-Type Beam Clamp with Locknut is highly recommended. The offset design permits unlimited rod adjustment. The hanger rod may be threaded completely through the clamp. The open design allows easy inspection of the thread engagement.

CONSTRUCTION: Reversible C-Type Beam Clamps are made of carbon steel. Hardened steel cup point "set screws" with carbon steel locknuts are also provided.

FINISHES AVAILABLE: Black, Electro-Plated or HDG.

ORDERING: Specify figure number, rod diameter, name and finish.

EXAMPLE: Fig. 557, 1/2", Reversible C-Type Beam Clamp with Locknut, HDG.

| ROD DIA. A (IN) | B (IN) | C (IN) | D (IN) | E (IN) | F (IN) | MAX. REC. LOAD (LBS)* | APPROX WT./100 (LBS) |
|--------------------|-----------|-----------|-----------|-----------|-----------|--------------------------|----------------------------|
| 3/8 | 1 3/16 | 3/4 | 1 | 7/16 | 1 | 610 | 28 |
| 1/2 | 1 1/2 | 3/4 | 1 | 9/16 | 1 1/4 | 1130 | 55 |
| 5/8 | 1 1/2 | 3/4 | 1 | 9/16 | 1 1/4 | 1130 | 55 |

* Max. loads for clamp with set screw in up or down position.