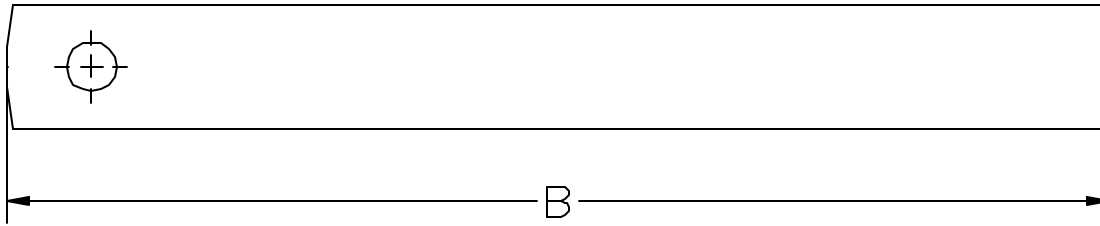


AAA TECHNOLOGY & SPECIALTIES CO., INC.

FIG. 566
BEAM CLAMP RETAINING STRAP



APPLICATION: Fig. 566 Beam Clamp Retaining Straps are recommended for use with various types of beam clamps in order to provide a more secure means of fastening to the structural member.

CONSTRUCTION: A Fig. 566 Beam Clamp Retaining Strap consists of a bent flat bar with a hook on one end and an attachment hole for the support rod or the beam clamp in the other end of the flat bar.

FINISHES AVAILABLE: Electro-Plated.

ORDERING: Specify figure number, type, name and finish.

EXAMPLE: Fig. 566, 2, Beam Clamp Retaining Strap, Electro-Plated.

TYPE	ROD DIA. A (IN)	HOLE DIA. (IN)	B (IN)
1	3/8	7/16	Specify
1a	1/2	9/16	Specify
2	5/8	11/16	Specify
2a	3/4	13/16	Specify
3	3/8 - 7/8	Specify	Specify

*Longer Lengths are available, consult factory.