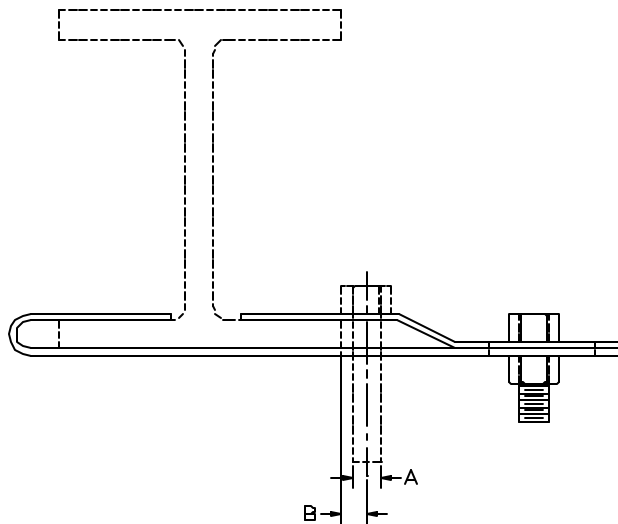


AAA TECHNOLOGY & SPECIALTIES CO., INC.

FIG. 584
ADJUSTABLE SIDE BEAM CLAMP



APPLICATION: Fig. 584 Adjustable Side Beam Clamps are recommended for use in suspending hanger rods from the edge of the overhead support beams. The support members are I-beams or wide flange beams.

CONSTRUCTION: A Fig. 584 Adjustable Side Beam Clamp consists of two bent flat bars as shown in the diagram above. One end of one flat bar is hooked and the other end of the flat bar has a hole and a slot punched in it as shown. The second flat bar is offset as shown in the diagram and has a hole and a slot punched in it as shown. Both bent flat bars are attached with a bolt and hex nut as shown. The flat bars are carbon steel.

FINISHES AVAILABLE: Black, Hot Dip Galvanized or Electro-Plated.

ORDERING: Specify figure number, rod diameter, width and thickness of flange, name and finish, if other than black.

EXAMPLE: Fig. 584, 5/8", Flange width = 5.25" & thickness = .330", Adjustable Side Beam Clamp, HDG.

PIPE DIA.	ROD DIA. A (IN)	B (IN)	MAX. REC. LOAD (LBS)*	APPROX. WT./100 (LBS)
3/4 - 2	3/8	2 1/16	610	20
2 1/2 - 3 1/2	1/2	2 5/16	1130	40
4 - 5	5/8	2 7/16	1550	44
6	3/4	2 7/8	2100	65
8 - 12	7/8	3	2350	78

*With minimum Safety Factor of 5 at maximum temperature of 450°F.