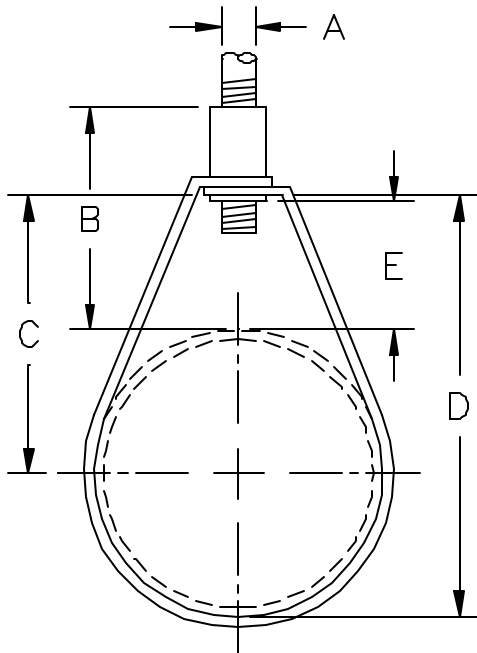


# AAA TECHNOLOGY & SPECIALTIES CO., INC.

**FIG. 618**  
**ADJUSTABLE BAND HANGER W/ SWIVEL NUT**



**APPLICATION:** An Adjustable Band Hanger with Swivel Nut provides for vertical support of small diameter piping systems. The elevation of the piping system may be altered by adjusting the position of the swivel nut on the hanger rod at the top of the hanger. Temporary support is not required for the piping while elevation changes are being made. The swivel nut is knurled to provide a gripping surface for the use of pliers when adjusting the elevation of the pipe. The nut has a retainer to keep it from dropping out of the ring while it is in the open position being fitted onto the pipe. Installation and adjustment of an Adjustable Band Hanger with a Swivel Nut is easier than for an Adjustable Band Hanger without a Swivel Nut.

**CONSTRUCTION:** An Adjustable Band Hanger with a Swivel Nut consists of a piece of carbon steel shaped to the proper configuration and a swivel nut.

**FINISHES AVAILABLE:** Galvanized before shaped.

**ORDERING:** Specify figure number, nominal pipe diameter and name.

**EXAMPLE:** Fig. 618, 3", Adjustable Band Hanger w/ Swivel Nut.

NOM. PIPE DIA.	REC. SAFE LOAD (LBS.)	A STD. (IN)	A NFPA (IN)	B (IN)	C (IN)	D (IN)	E (IN)	STEEL SIZE	WT. PER 100
1/2	400	3/8	3/8	1 3/16	2 5/8	3 1/8	13/16	16 ga. x 7/8	12
3/4	400	3/8	3/8	1 1/8	2 1/2	3 1/8	3/4	16 ga. x 7/8	12
1	400	3/8	3/8	1 5/16	2 5/8	3 3/8	1	16 ga. x 7/8	16
1 1/4	400	3/8	3/8	1 3/8	2 7/8	3 3/4	1 1/16	16 ga. x 7/8	17
1 1/2	400	3/8	3/8	1 9/16	2 7/8	3 7/8	1 1/4	16 ga. x 7/8	18
2	400	3/8	3/8	1 3/4	3	4 1/4	1 7/16	14 ga. x 1	20
2 1/2	600	1/2	3/8	1 5/8	4 1/4	5 3/4	1 1/8	14 ga. x 1	41
3	600	1/2	3/8	1 1/2	4 1/4	6	1 1/8	1/8 x 1	44
3 1/2	600	1/2	3/8	1 1/2	4 3/4	6 3/4	1 1/8	1/8 x 1	51
4	1000	5/8	3/8	1 1/2	5 1/8	7 3/8	1 1/8	1/8 x 1 1/4	56
5	1250	5/8	1/2	2 3/16	6 1/8	9	1 3/4	1/8 x 1 1/4	96
6	1250	3/4	1/2	2 3/8	6	9 3/8	1 13/16	1/8 x 1 1/2	97
8	1250	3/4	1/2	2 3/8	7 15/16	12 1/4	1 5/8	1/8 x 1 3/4	127