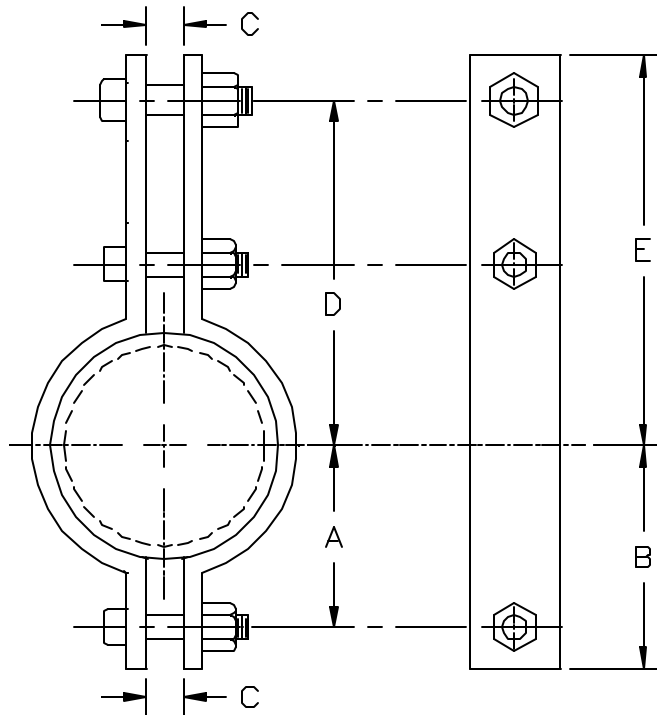


# AAA TECHNOLOGY & SPECIALTIES CO., INC.

**FIG. 739**  
**INTERMEDIATE 3 BOLT ALLOY PIPE CLAMP**



**APPLICATION:** Fig. 739 Intermediate 3 Bolt Alloy Pipe Clamps are recommended for the support of hot piping with insulation when the temperature exceeds 750 °F and is less than 1050 °F. Fig. 739 Intermediate 3 Bolt Alloy Pipe Clamps have been designed to carry loads larger in magnitude than the Fig. 736 Standard 3 Bolt Alloy Pipe Clamp. The 3 bolt design enables the attachment to the pipe clamp outside of the insulation. For high temperature piping with thick insulation and a loading larger than this clamp will carry, a Fig. 742 or 745 3 Bolt Alloy Pipe Clamp may be used. Or, if the temperature and loads dictate, Alloy Yoke Clamps, Fig. 748 or 751, may be used. The selection of the proper 3 Bolt Pipe Clamp depends upon the temperature of the piping system and load to be carried. The loads shown on the data chart are listed for 950 °F, 1000 °F and 1050 °F service.

**CONSTRUCTION:** Fig. 739 Intermediate 3 Bolt Alloy Pipe Clamps are made from ASTM A387-Gr. 22 steel plate or bar stock and are provided with three alloy bolts and nuts.

**FINISHES AVAILABLE:** Black.

**ORDERING:** Specify figure number, nominal pipe diameter, name.

**EXAMPLE:** Fig. 739, 12", Intermediate 3 Bolt Alloy Pipe Clamp.

NOM. PIPE DIA. (IN)	MAX. REC. LOAD (LBS.)			A CTRLINE TO BTM BOLT (IN)	B CTRLINE TO BTM END (IN)	C GAP (IN)	D CTRLINE TO TOP BOLT (IN)	E CTRLINE TO TOP END (IN)	WT. LBS. PER 100
	950 °F.	1000 °F.	1050 °F.						
2	2400	1800	1400	2 5/8	3 5/8	1	6 5/8	7 5/8	750
2 1/2	3600	2700	2100	3	4 1/8	1 1/8	7	8 1/8	1100
3	3600	2700	2100	3 3/8	4 1/2	1 1/8	7 3/8	7 1/2	1300
3 1/2	3600	2700	2100	3 5/8	4 3/4	1 1/8	7 5/8	8 3/4	1450
4	4700	3500	2700	4 1/4	5 1/2	1 1/4	8 1/4	9 1/2	2000
5	4700	3500	2700	4 3/4	6	1 1/4	8 3/4	10	2100
6	4700	3500	2700	5 3/8	6 5/8	1 1/4	10 3/8	11 5/8	2300
8	7600	5650	4400	7	8 5/8	1 1/2	12	13 5/8	5400
10	7600	5650	4400	8	9 5/8	1 1/2	13	12	5900
12	7600	5650	4400	9	10 5/8	1 1/2	14	15 5/8	6400
14	7600	5650	4400	9 3/4	11 3/8	1 1/2	14 3/4	16 3/8	6800
16	7600	5650	4400	10 3/4	12 1/4	1 1/2	15 3/4	17 3/8	7300
18	7600	5650	4400	11 3/4	13 1/4	1 1/2	16 3/4	18 3/8	7800
20	9500	7050	5450	13	14 3/4	1 3/4	18	19 7/8	13000
24	11000	8150	6300	15 1/2	17 1/4	1 3/4	20 1/2	22 1/4	19000
26	11000	8150	6300	16 1/2	18 1/4	1 3/4	21 1/2	23 3/4	20000
28	11000	8150	6300	17 1/2	19 3/4	1 3/4	22 1/2	24 3/4	21000
30	14500	10750	8300	18 3/4	21	2 1/8	23 3/4	26	30000
32	14500	10750	8300	19 3/4	22	2 1/8	24 3/4	27	32000
34	14500	10750	8300	20 3/4	23	2 1/8	25 3/4	28	33000
36	14500	10750	8300	21 3/4	24	2 1/8	26 3/4	29	35000
42	14500	10750	8300	24 3/4	27	2 1/8	29 3/4	32	39000