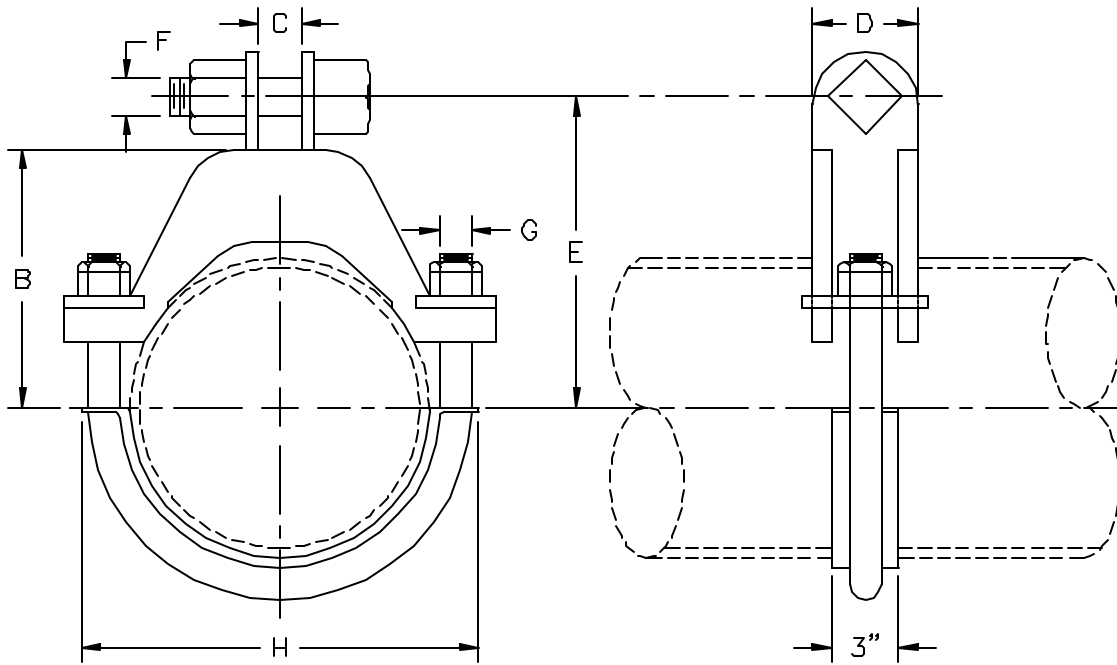


AAA TECHNOLOGY & SPECIALTIES CO., INC.

FIG. 751
HEAVY DUTY ALLOY YOKE PIPE CLAMP



APPLICATION: Fig. 751 Heavy Duty Alloy Yoke Pipe Clamps are recommended for the support of hot piping with 4" to 6" of insulation where the support loads are large in magnitude. Note that the maximum recommended service temperature for this pipe clamp is 1,100 °F.

CONSTRUCTION: Fig. 751 Heavy Duty Alloy Yoke Pipe Clamps consists of a chrome molybdenum steel frame and a stainless steel u-bolt.

FINISHES AVAILABLE: Black.

ORDERING: Specify figure number, nominal pipe diameter and name.

EXAMPLE: Fig. 751, 16", Heavy Duty Alloy Yoke Pipe Clamp.

PIPE DIA. RANGE (IN)	MAX. RECOM. LOAD (LBS)*			B (IN)	C (IN)	D (IN)	E (IN)	F (IN)	G (IN)	H (IN)	APPROX WT. /100 (LBS)
	950°F-1050°F	1075°F	1100°F								
8 5/8 - 10 13/16	12500	12000	11500	10 1/4	2 1/4	5	14	1 3/4	1	15 1/4	7200
10 7/8 - 12 13/16	15500	15000	14500	11 3/4	2 1/4	5	15 1/4	2	1 1/8	17 3/4	10300
12 7/8 - 14 1/8	15500	15000	14500	12 1/2	2 1/4	5	16	2	1 1/8	19 1/4	11000
14 3/16 - 16 1/8	20000	19200	18500	13 3/4	2 1/2	6	17 1/2	2 1/4	1 1/4	22	16700
16 3/16 - 18 1/8	20000	19200	18500	14 3/4	2 1/2	6	18 1/2	2 1/4	1 1/4	24	18000
18 3/16 - 20 1/4	23700	22700	21900	16	2 3/4	6 1/2	20	2 1/2	1 3/8	26 1/2	22800
20 5/16 - 22 1/4	23700	22700	21900	17	2 3/4	6 1/2	21	2 1/2	1 3/8	28 1/2	24600
22 5/16 - 24 1/4	29000	28000	27000	18 1/2	3	7	22 3/4	2 3/4	1 1/2	30 3/4	32500
24 5/16 - 26 1/4	29000	28000	27000	19 1/2	3	7	23 3/4	2 3/4	1 1/2	32 3/4	34000
26 5/16 - 28 1/4	29000	28000	27000	20 1/2	3	7	24 3/4	2 3/4	1 1/2	34 3/4	35500
28 5/16 - 30 1/4	29000	28000	27000	21 1/2	3	7	25 3/4	2 3/4	1 1/2	36 3/4	36900

*Based on allowable stresses shown in ASME Code for Pressure Piping.