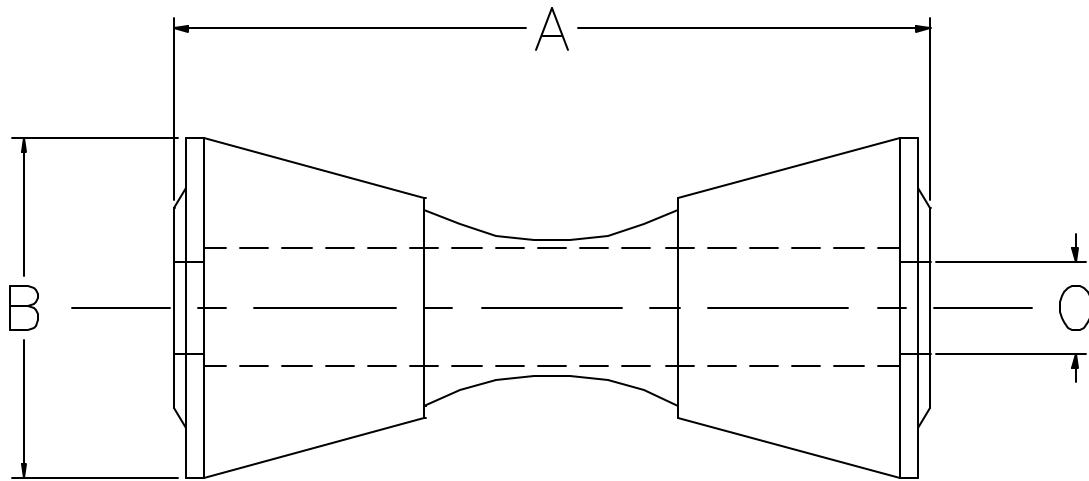


# AAA TECHNOLOGY & SPECIALTIES CO., INC.

**FIG. 824  
CAST IRON PIPE ROLL**



**APPLICATION:** A Fig. 824 Cast Iron Pipe Roll is the roll unit in our Fig. 827 and 830 Pipe Roll supports. It can also be used to replace damaged roll units in existing installations as well as being incorporated in custom field fabricated pipe rolls.

**CONSTRUCTION:** The Fig. 824 Cast Iron Pipe Roll is constructed of cast iron. The Pipe Roll is designed so that the outside diameter of the cylinder to be supported, be it bare piping or insulated piping, contacts the two conical shapes on either end of the Pipe Roll. The contact points are to be on the flat surface of the conical sections.

**NOTE:** Use the size selection chart for assistance in determining the appropriate Pipe Roll for your application.

**FINISHES AVAILABLE:** Black, Hot Dip Galvanized, Electro-Plated or Painted.

**ORDERING:** Specify figure number, roll number, name and finish, if other than black.

**EXAMPLE:** Fig. 824, Size 2, Cast Iron Pipe Roll, electro-plated.

ROLL NO.	NOM. PIPE DIA. RANGE (IN)	A (IN)	B (IN)	ROD DIA. C (IN)	WT. PER 100 (LBS)
1	2 - 3 1/2	3	2	5/8	150
2	4 - 6	3 3/8	2 3/16	5/8	150
3	7 - 10	5	3 1/2	3/4	385
4	11 - 14	7	4 1/4	7/8	825
5	15 - 20	8 1/8	4 3/4	1	1020
6	21 - 24	9	4 7/8	1	1450
7	25 - 30	11	5 3/4	1 1/4	1825
8	31 - 36	12 1/2	6 1/2	1 1/4	2100
9	37 - 42	14 1/4	7 3/4	1 1/2	2375