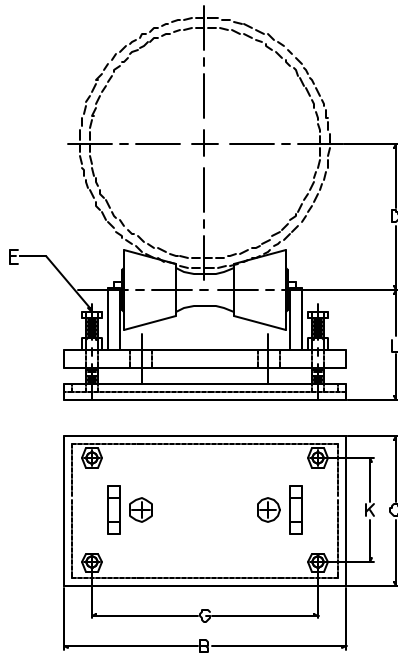


AAA TECHNOLOGY & SPECIALTIES CO., INC.

**FIG. 830
ADJUSTABLE PIPE ROLLER & STAND**



APPLICATION: A Fig. 830 Adjustable Pipe Roller and Stand is used to support piping where 1.) significant movement along the axis of the piping at the support location occurs due to thermal expansion or contraction of the piping, 2.) support is to be provided from a beam or other structural member located below the piping and 3.) vertical adjustment of the pipe roll is necessary and relatively easy to accomplish. This Adjustable Pipe Roller and Stand allows axial movement of the piping with virtually a negligible amount of frictional resistance to the movement. Vertical adjustment is achieved by turning the adjustment bolts up or down on the base. A Fig. 830 Adjustable Pipe Roller and Stand is designed to be bolted or welded to the supporting structural members.

CONSTRUCTION: A Fig. 830 Adjustable Pipe Roller and Stand consists of a Fig. 824 Cast Iron Pipe Roll, four Adjusting Screws with lock nuts for securing in final position and a Base Plate with a slot to enable anchorage to the supporting structure.

NOTE: See size selection chart for assistance in determining the appropriate Pipe Roller and Stand number for your application.

FINISHES AVAILABLE: Black, Hot Dip Galvanized, Electro-Plated or Painted.

ORDERING: Specify figure number, Pipe Roller and Stand number, name and finish, if other than black.

EXAMPLE: Fig. 830, No. 2, Adjustable Pipe Roller and Stand, HDG.

NOM. PIPE DIA. RANGE (IN)	E (IN)	G (IN)	K (IN)	L (IN)	
				MIN.	MAX.
2 - 3	5/8	3 1/2	4 1/8	3	3 7/8
4 - 6	5/8	4 3/4	4 3/8	3 3/8	4 1/2
8 - 10	3/4	7	5	4 7/8	6 5/8
12 - 14	7/8	9 1/4	6	5 7/8	7 5/8
16 - 20	1	10 1/4	6 1/2	5 7/8	7 3/4
22 - 24	1	11 1/2	6 3/4	6 1/8	8
26 - 30	1 1/4	14 3/8	8	7 1/4	10 1/2