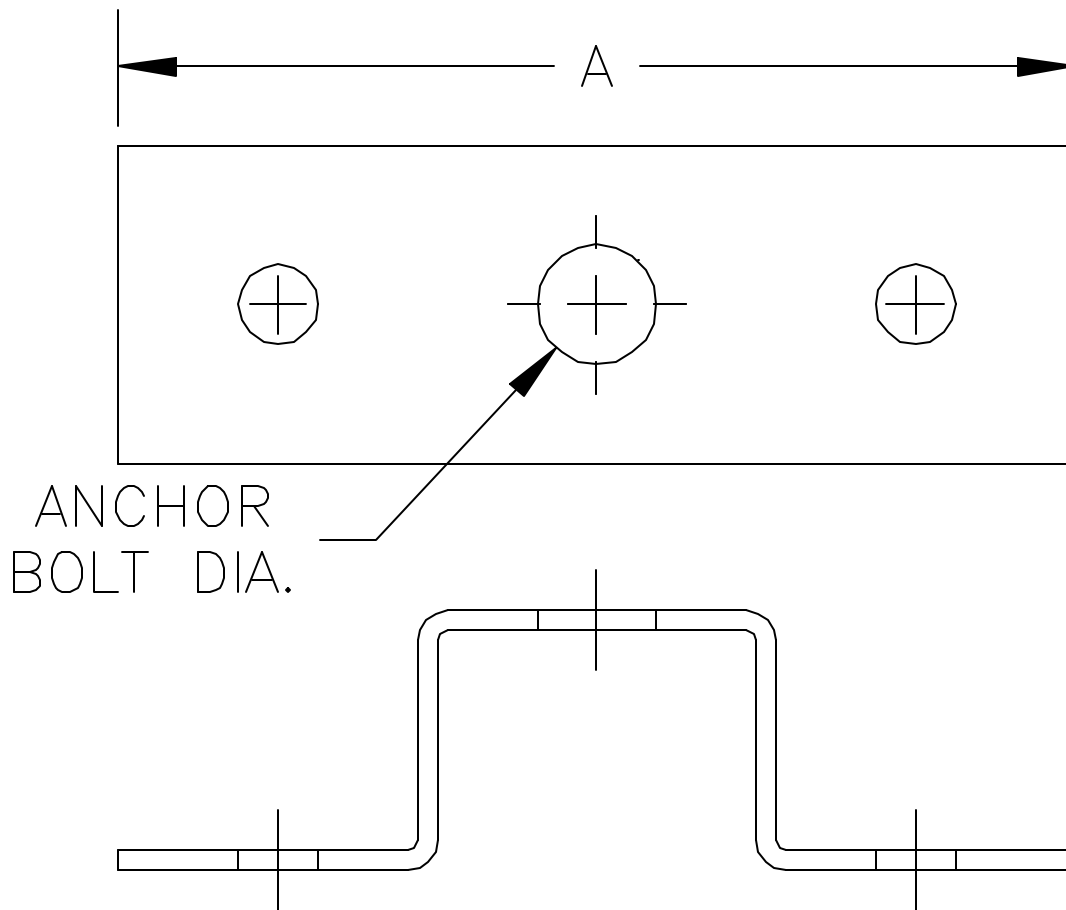


AAA TECHNOLOGY & SPECIALTIES CO., INC.

FIG. 903
CONCRETE INSERT FRAME FOR ANCHOR BOLT



APPLICATION: Fig. 903 Concrete Insert Frame for Anchor Bolt is designed to be embedded in concrete and used as an attachment point for equipment, pipe supports or structural steel.

CONSTRUCTION: A Concrete Insert Frame for Anchor Bolt is furnished in diameters from 3/8 through 7/8 inch.

FINISHES AVAILABLE: Electro-Plated.

ORDERING: Specify figure number, rod diameter and name.

EXAMPLE: Fig. 903, 5/8" diameter, Concrete Insert Frame for Anchor Bolt.

ROD DIA.	DESIGN LOAD - VERTICAL		DESIGN LOAD SHEAR		DESIGN LOAD 450		"E" EMBED. DEPTH (IN)	DE MIN. (IN)
	HARD ROCK (LBS)	LT. WT. (LBS)	HARD ROCK (LBS)	LT. WT. (LBS)	HARD ROCK (LBS)	LT. WT. (LBS)		
3/8	1255	753	978	733	777	525	3 1/2	2
1/2	2321	1392	978	733	980	679	3 1/2	2
5/8	780	468	1278	958	688	445	4	2
3/4	1346	806	1278	958	927	619	4	2 1/2
7/8	2321	1392	1278	958	1166	803	4	6