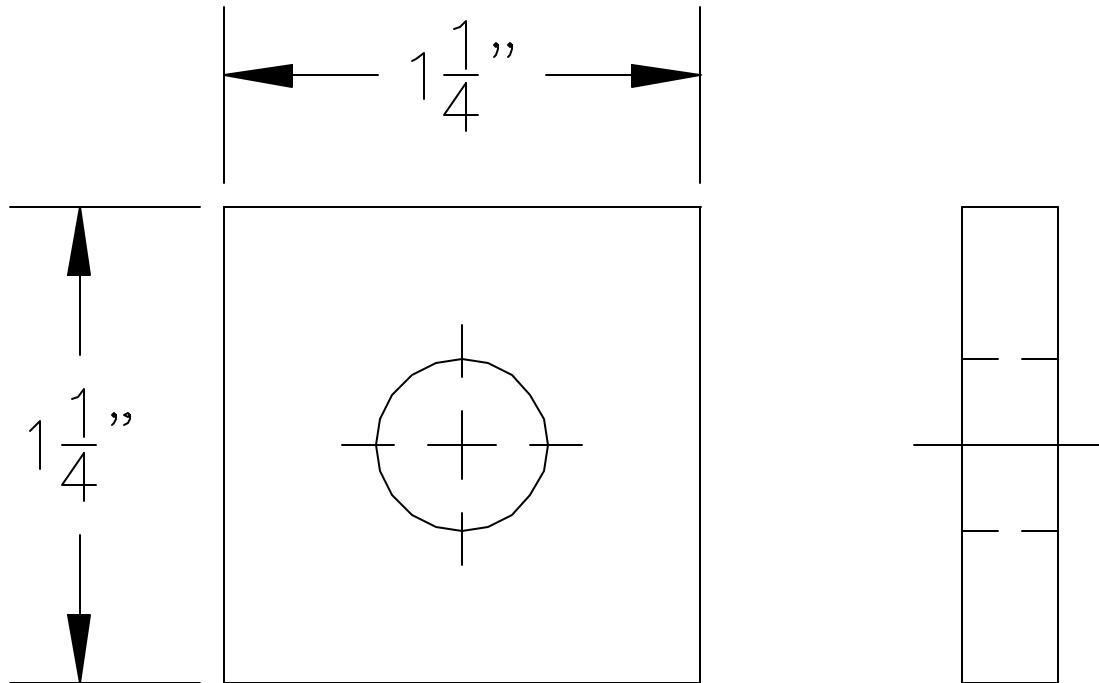


AAA TECHNOLOGY & SPECIALTIES CO., INC.

FIG. 909
STEEL SPOT INSERT NUT



APPLICATION: Fig. 909 Steel Spot Insert Nuts are to be used with Fig. 906 Steel Spot Concrete Inserts in order to attach threaded rods or bolts.

CONSTRUCTION: A Steel Spot Insert Nut is constructed of carbon steel and is furnished in diameters from 1/4 through 7/8 inch.

FINISHES AVAILABLE: Electro-Plated.

ORDERING: Specify figure number, rod diameter and name.

EXAMPLE: Fig. 909, 5/8" diameter, Steel Spot Insert Nut.

ROD DIA.	MAX. REC. LOAD (LBS)*	APPROX. WT./100
1/4	240	8
3/8	600	13
1/2	600	12
5/8	600	11
3/4	600	10
7/8	600	9

*Based on a straight pull of 600 lbs. when used with Figure 909.