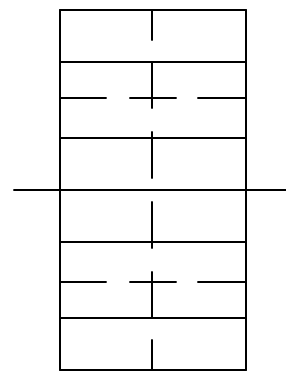
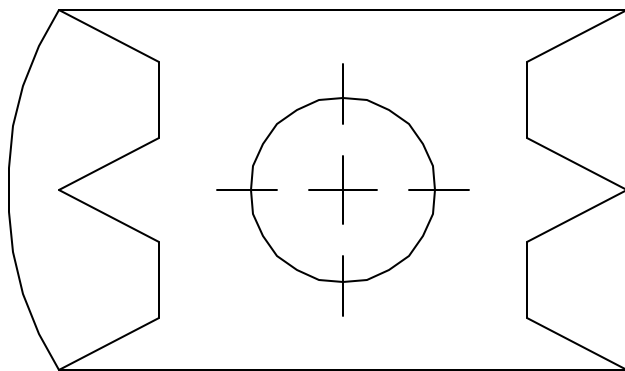
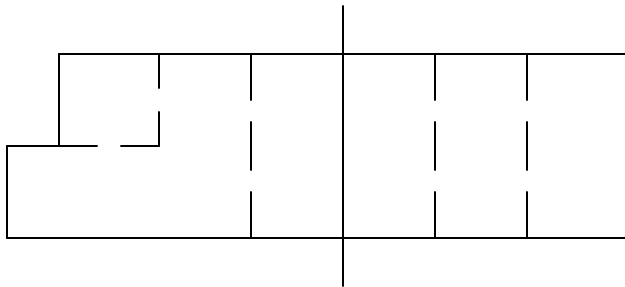


AAA TECHNOLOGY & SPECIALTIES CO., INC.

FIG. 915
CB-UNIVERSAL CONCRETE INSERT NUT



APPLICATION: Fig. 915 CB-Universal Concrete Insert Nuts are to be used with Fig. 912 CB-Universal Concrete Inserts in order to attach threaded rods or bolts.

CONSTRUCTION: A CB-Universal Concrete Insert Nut is constructed of carbon steel and is furnished in diameters from 3/8 through 7/8 inch.

FINISHES AVAILABLE: Black or Electro-Plated.

ORDERING: Specify figure number, rod diameter and name.

EXAMPLE: Fig. 915, 1/2" diameter, CB-Universal Concrete Insert Nut.

ROD DIA.	MAX. REC. LOAD (LBS)*	APPROX. WT./100
3/8	610	130
1/2	1130	130
5/8	1140	130
3/4	1140	130
7/8	1140	130

*Based on insert and nut only with minimum safety factor of 5.

Rating is subject to the condition that the concrete used is of sufficient strength to hold the insert.