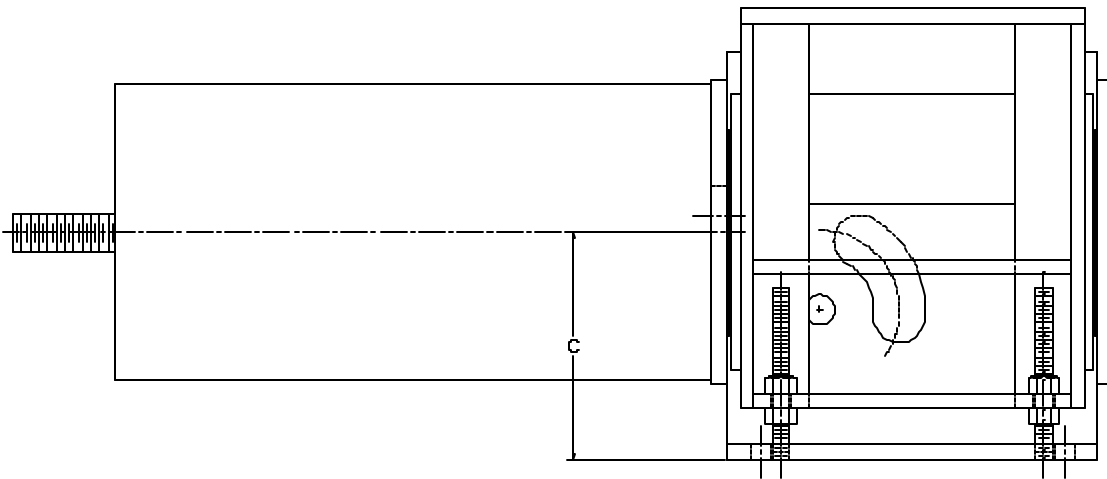


# AAA TECHNOLOGY & SPECIALTIES CO., INC.

## U TYPE UPTHRUST



The Upthrust support is designed for use when the pipe must be supported from below. The U-type EqualBalance may be attached to the supporting structure, either by bolting or welding. Attachment to the top plate shall be made with a sliding type connection (See General Note No.1). Positive low friction vertical alignment is maintained by 20 cam followers pressed into accurately machined holes. The U-type EqualBalance is available for loads from 34 through 20,117 pounds and travels from 1 ½ through 10 inches. See pages 1 through 9 for complete selection and ordering data.

DIMENSION "C"

SIZE	TOTAL TRAVEL (IN)										
	1 1/2	2	2 1/2	3	3 1/2	4	4 1/2	5	5 1/2	6	6 1/2
1 - 9	5	5 1/2	6	6 1/2	7	7 1/2	8	8 1/2	9	9 1/2	
10 - 24		7 5/8	8 1/8	8 5/8	9 1/8	9 5/8	10 1/8	10 5/8	11 1/8	11 5/8	
25 - 30			9 3/8	9 7/8	10 3/8	10 7/8	11 3/8	11 7/8	12 3/8	12 7/8	13 3/8
31 - 34			10 1/2	11	11 1/2	12	12 1/2	13	13 1/2	14	14 1/2
35 -44				11	11 1/2	12	12 1/2	13	13 1/2	14	14 1/2
45 - 50				11 7/8	12 3/8	12 7/8	13 3/8	13 7/8	14 3/8	14 7/8	15 3/8
51 - 55					13 1/2	14	14 1/2	15	15 1/2	16	16 1/2
56 - 57						14 1/2	15	15 1/2	16	16 1/2	17
58 -60							15 9/16	16 1/16	16 9/16	17 1/16	17 9/16

SHORT TRAVEL ←

→ STANDARD TRAVEL

SIZE	TOTAL TRAVEL (IN)										
	7	7 1/2	8	8 1/2	9	9 1/2	10	10 1/2	11	11 1/2	12
1 - 9											
10 - 24											
25 - 30	13 7/8	14 3/8	14 7/8								
31 - 34	15	15 1/2	16								
35 -44	15	15 1/2	16	16 1/2	17	17 1/2	18				
45 - 50	15 7/8	16 3/8	16 7/8	17 3/8	17 7/8	18 3/8	18 7/8				
51 - 55	17	17 1/2	18	18 1/2	19	19 1/2	20	20 1/2	21	21 1/2	22
56 - 57	17 1/2	18	18 1/2	19	19 1/2	20	20 1/2	21	21 1/2	22	22 1/2
58 -60	18 1/16	18 9/16	19 1/16	19 9/16	20 1/16	20 9/16	21 1/16	21 9/16	22 1/16	22 9/16	23 1/16

TYPE U-2