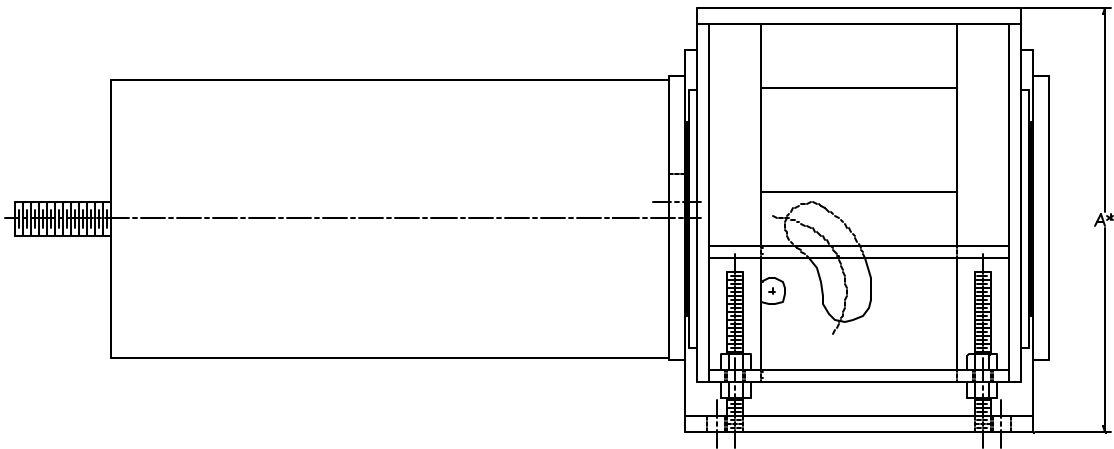


AAA TECHNOLOGY & SPECIALTIES CO., INC.

U TYPE UPTHRUST



The Upthrust support is designed for use when the pipe must be supported from below. The U-type EqualBalance may be attached to the supporting structure, either by bolting or welding. Attachment to the top plate shall be made with a sliding type connection (See General Note No.1). Positive low friction vertical alignment is maintained by 20 cam followers pressed into accurately machined holes. The U-type EqualBalance is available for loads from 34 through 20,117 pounds and travels from 1 1/2 through 10 inches. See pages 1 through 9 for complete selection and ordering data.

DIMENSION "A" *

SIZE	TOTAL TRAVEL (IN)										
	1 1/2	2	2 1/2	3	3 1/2	4	4 1/2	5	5 1/2	6	6 1/2
1 - 9	10 1/4	11 1/4	12 1/4	13 1/4	14 1/4	15 1/4	16 1/4	17 1/4	18 1/4	19 1/4	
10 - 24		15 3/8	16 3/8	17 3/8	18 3/8	19 3/8	20 3/8	21 3/8	22 3/8	23 3/8	
25 - 30			19	20	21	22	23	24	25	26	27
31 - 34			21	22	23	24	25	26	27	28	29
35 - 44				22 1/4	23 1/4	24 1/4	25 1/4	26 1/4	27 1/4	28 1/4	29 1/4
45 - 50				23 3/4	24 3/4	25 3/4	26 3/4	27 3/4	28 3/4	29 3/4	30 3/4
51 - 55					27	28	29	30	31	32	33
56 - 57						28 3/8	29 3/8	30 3/8	31 3/8	32 3/8	33 3/8
58 - 60							30 7/16	31 7/16	32 7/16	33 7/16	34 7/16

SHORT TRAVEL ←

→ STANDARD TRAVEL

SIZE	TOTAL TRAVEL (IN)										
	7	7 1/2	8	8 1/2	9	9 1/2	10	10 1/2	11	11 1/2	12
1 - 9											
10 - 24											
25 - 30	28	29	30								
31 - 34	30	31	32								
35 - 44	30 1/4	31 1/4	32 1/4	33 1/4	34 1/4	35 1/4	36 1/4				
45 - 50	31 3/4	32 3/4	33 3/4	34 3/4	35 3/4	36 3/4	37 3/4				
51 - 55	34	35	36	37	38	39	40	41	42	43	44
56 - 57	34 3/8	35 3/8	36 3/8	37 3/8	38 3/8	39 3/8	40 3/8	41 3/8	42 3/8	43 3/8	44 3/8
58 - 60	35 7/16	36 7/16	37 7/16	38 7/16	39 7/16	40 7/16	41 7/16	42 7/8	43 7/16	44 7/16	45 7/16