



Introducing:
TRI*COMPOSITE™ Pipe Supports

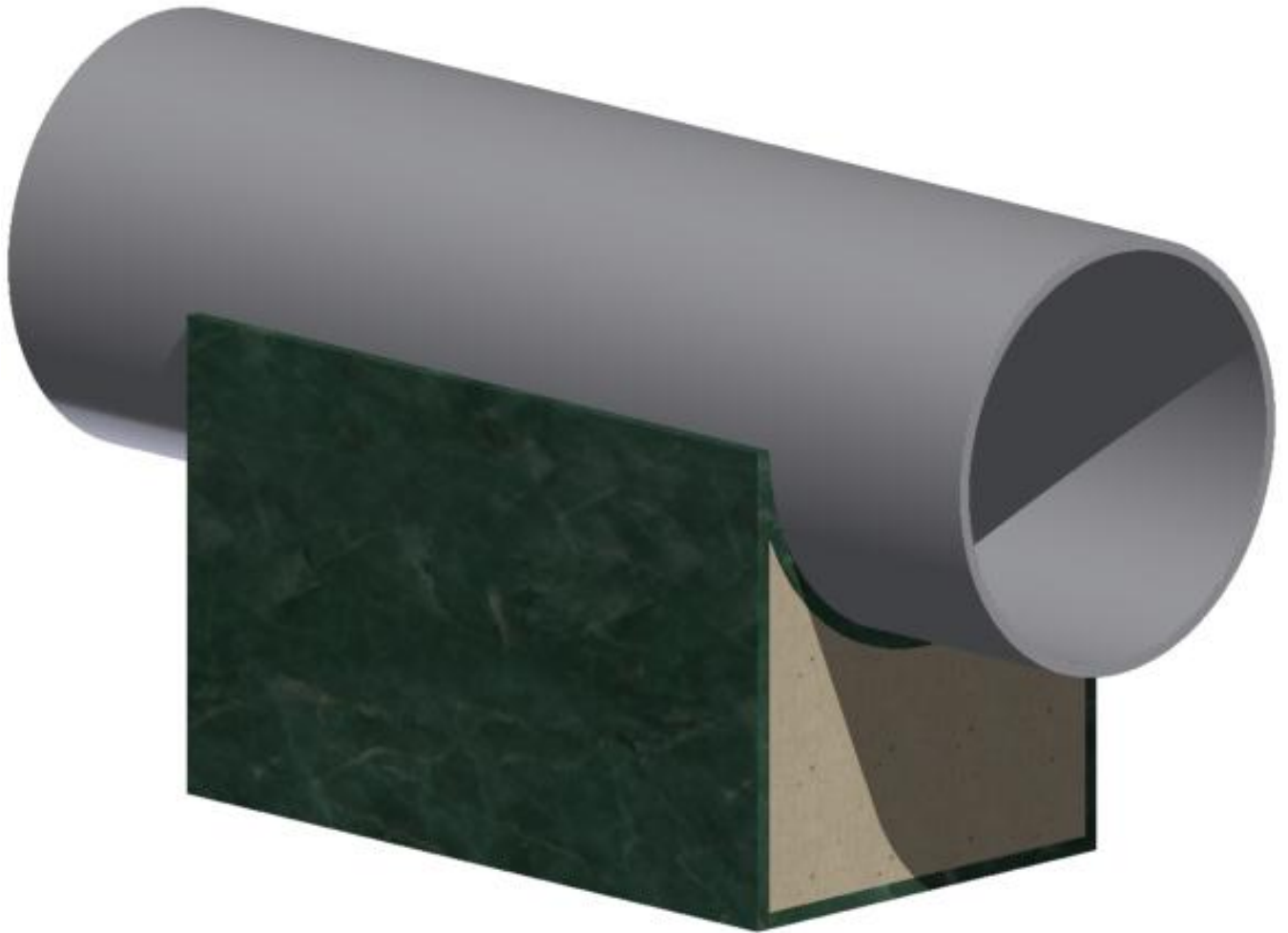




TABLE OF CONTENTS

	Page
Introduction to TRI*COMPOSITE™	3
TRI*COMPOSITE™ Duty Cycle.....	4
Part Number Description.....	5
Range of Sizes and Composition.....	6
Light Duty 30°, 60° and 90°.....	7
Medium Duty 30°, 60° and 90°.....	8
Heavy Duty 30°, 60° and 90°.....	9
Light Duty 120°.....	10
Medium Duty 120°.....	11
Heavy Duty 120°.....	12
Light Duty 180°.....	13
Medium Duty 180°.....	14
Heavy Duty 180°.....	15
Guided 30° and 60° Supports.....	16
Guided 90° and 120° Supports.....	17
Guided 180° Supports.....	18



Introduction to TRI*COMPOSITE™ Pipe Supports

This is an exclusive premier product where traditional metal pipe supports do not provide all of the requirements needed for particular applications. **TRI*COMPOSITE™** is a unique product that enhances temperature and corrosion insulation properties. These Pipe Supports also have greater fire retardant capabilities than exclusively Polyurethane supports.

TRI*COMPOSITE™ Pipe Supports avoid metal-to-metal contact and can be used on insulated or un-insulated pipelines. These Pipe Supports act as insulators and prevent surface corrosion by keeping out moisture, isolating electrical continuity and have a superior chemical resistance.

Made from Fiberglass reinforced Vinyl Ester or Epoxy resins it provides a non-conductive surface that has from 35,000 to 45,000 psi compressive strength and operating temperatures from -60 °F to 500 °F depending on selected materials.

Where required, we can provide Polypropylene, Aramid or Carbon fiber reinforcement to even further enhance the flexure, impact and vibration resistance or strength of your unique application needs.

Our **TRI*COMPOSITE™** Pipe Supports insulates from induced electrical currents that may filter from the ground acting as a barrier that can cause localized corrosion to your pipeline while also inhibiting electrical shock. It further is lighter and more transportable speeding up installations and reducing transportation costs.

Our **TRI*COMPOSITE™** Pipe Supports have the fiberglass reinforced matrix bonded to various densities of Polyurethane Foam core. These combined materials provide greater bearing strengths while at the same time acting as a corrosion, electrical and insulation barrier.

TRI*COMPOSITE™ Guided Pipe Supports are available for medium and heavy duty rated supports. These are stainless over stainless or PTFE over stainless as described in our **TRI*SLIDE™** guides.



Light Duty TRI*COMPOSITE™ Pipe Support

Our Light Duty composite pipe supports have the selected bearing pad bonded a Polyurethane foam base, typically of 2 lb/in² and 4 lb/in². Base remains unreinforced and can be surface coated with UV resistant coating or bonded into a continuous foam insulated and shielded pipeline.

Medium Duty TRI*COMPOSITE™ Pipe Support

Our Medium Duty composite pipe supports have the selected bearing pad bonded a Polyurethane foam base, typically of 6 lb/in². These further have the same fiberglass reinforced matrix encasing longitudinally the Polyurethane foam base which is fused to the bearing pad with UV coating on exposed foam.

Heavy Duty TRI*COMPOSITE™ Pipe Support

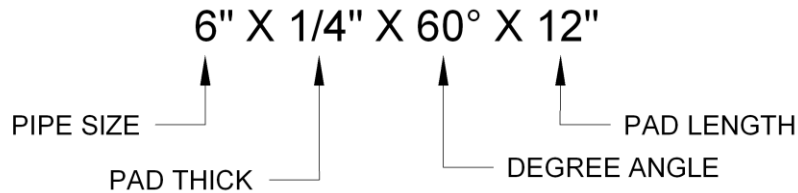
Our Heavy Duty composite pipe supports have the selected bearing pad bonded a Polyurethane foam base, typically poured with 8 lb/in² to 20 lb/in² density foam. These further have the same fiberglass reinforced matrix encasing all sides of the Polyurethane foam base which is also fused to the bearing pad. Wear pad surface thickness starts at 3/8" up to 20" pipe and increases to 1/2" thick above 24" pipe sizes.

Guided TRI*COMPOSITE™ Pipe Supports

TRI*COMPOSITE™ Pipe Supports are optionally available with our **TRI*SLIDE™** Low Friction Slide Bearings that allow axial movement that can be guided or directionally constrained. Please refer to our **TRI*SLIDE™** catalog for types, capacities and sizing for your slide bearing needs.



Part Number Description



TYPICAL SIZES

Description	Pipe Size (")	Thickness (")	Angle (°)	Length (")	Material
TC-.75-.25-60-6-V	3/4	1/4	60	6	Vinyl Ester
TC-1.0-.25-120-12-V	1	1/4	120	12	Vinyl Ester
TC-1.5-.25-180-18-E	1.5	1/4	180	18	Epoxy
TC-2.0-.25-60-24-V	2	1/4	60	24	Vinyl Ester
TC-2.5-.25-120-6-V	2.5	1/4	120	6	Vinyl Ester
TC-3.0-.25-180-12-E	3	1/4	180	12	Epoxy
TC-3.5-.25-60-18-V	3.5	1/4	60	18	Vinyl Ester
TC-4.0-.25-120-24-V	4	1/4	120	24	Vinyl Ester
TC-4.5-.25-180-6-E	4.5	1/4	180	6	Epoxy
TC-5.0-.25-60-12-V	5	1/4	60	12	Vinyl Ester
TC-6.0-.25-120-18-V	6	1/4	120	18	Vinyl Ester
TC-8.0-.25-180-24-E	8	1/4	180	24	Epoxy
TC-10-.25-60-6-V	10	1/4	60	6	Vinyl Ester
TC-12-.25-120-12-V	12	1/4	120	12	Vinyl Ester
TC-14-.25-180-18-E	14	1/4	180	18	Epoxy
TC-16-.25-60-24-V	16	1/4	60	24	Vinyl Ester
TC-18-.25-120-6-V	18	1/4	120	6	Vinyl Ester
TC-20-.25-180-12-E	20	3/8	180	12	Epoxy
TC-24-.25-60-18-V	24	3/8	60	18	Vinyl Ester
TC-30-.25-120-24-V	30	3/8	120	24	Vinyl Ester
TC-32-.25-180-6-E	32	3/8	180	6	Epoxy
TC-36-.25-60-12-V	36	3/8	60	12	Vinyl Ester

TC-XX-XX-XX-XX-V Vinyl Ester Resin

TC-XX-XX-XX-XX-E Epoxy Resin

TC-XX-XX-XX-XX-P Polyester Resin



SIZE RANGES & COMPOSITION

LENGTH

Standard Pipe Support Lengths: 12", 18", 24" (Typical 6" increments)

Custom Pipe Support Lengths: 6" to 36" (any length in this range)

Metric Sizes are available.

RADIUS

Standard Radius Angles: 30°, 60°, 90°, 120°, 180°

Custom Radius Angles: 15° to 360° (any radius in this range)

THICKNESS

Standard Thickness: Pipe sizes ¾" to 22" (1/4")

Pipe sizes 24" to 36" (3/8")

Heavy Duty Thickness: ½" to ¾"

MATERIALS

Standard Composites: Fiberglass + Vinyl Ester Resin

Fiberglass + Epoxy Resin

Custom Composites: Fiberglass + Polyimide

Aramid + any above resin

Polypropylene + any above resin

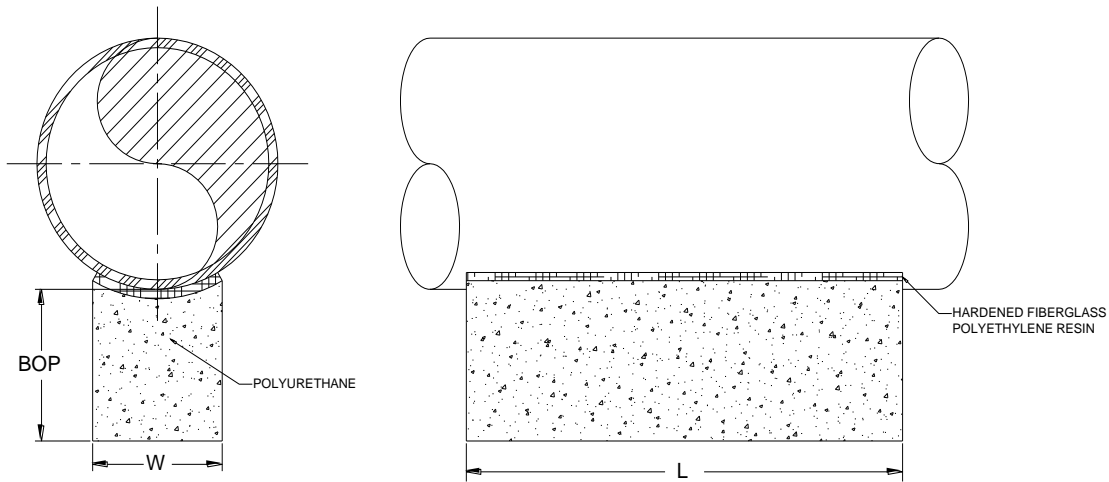
GUIDED SUPPORTS

Types: PTFE or Stainless over Stainless

Graphite over Stainless or Carbon



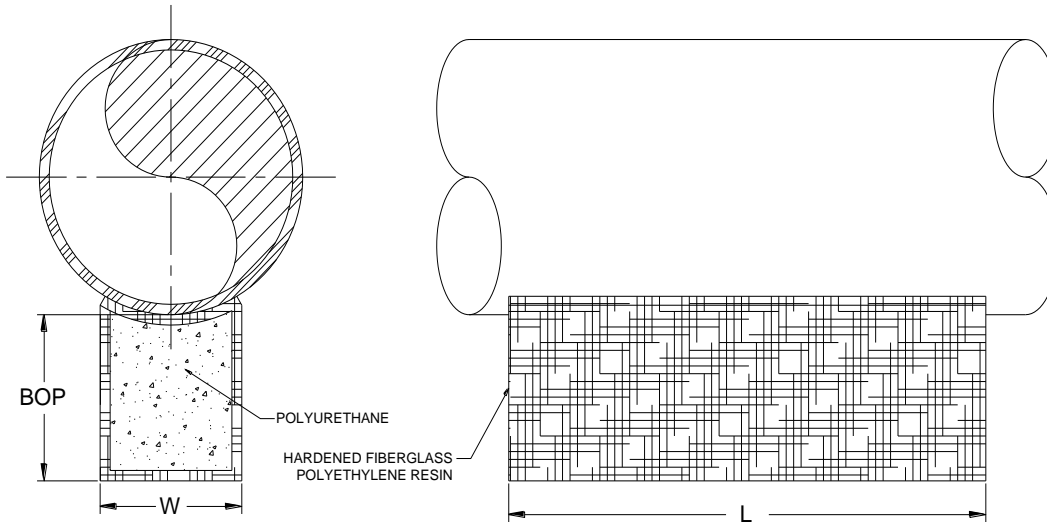
LIGHT DUTY 30°, 60° AND 90°



PIPE SIZE	LIGHT DUTY WALL THICK.	SIZE				
		BOP	ANGLE	PAD THK	W	L
2"	None	4"	90°	1/4"	2 1/6"	6" TO 24"
2 1/2"	None	4"	90°	1/4"	2 3/8"	6" TO 24"
3"	None	4"	90°	1/4"	2 13/16"	6" TO 24"
3 1/2"	None	4"	90°	1/4"	3 3/16"	6" TO 24"
4"	None	4"	90°	1/4"	3 9/16"	6" TO 24"
6"	None	4"	60°	1/4"	3 9/16"	6" TO 24"
8"	None	4"	60°	1/4"	4 9/16"	6" TO 24"
10"	None	4"	60°	1/4"	5 5/8"	6" TO 24"
12"	None	4"	30°	1/4"	3 7/16"	6" TO 24"
14"	None	4"	30°	1/4"	3 3/4"	6" TO 24"
16"	None	4"	30°	1/4"	4 1/4"	6" TO 24"
18"	None	4"	30°	1/4"	4 13/16"	6" TO 24"
20"	None	4"	30°	1/4"	5 5/16"	6" TO 24"
24"	None	4"	30°	3/8"	6 3/8"	6" TO 24"
26"	None	4"	30°	3/8"	6 15/16"	6" TO 24"
28"	None	4"	30°	3/8"	7 7/16"	6" TO 24"
30"	None	4"	30°	3/8"	7 15/16"	6" TO 24"
32"	None	4"	30°	3/8"	8 1/2"	6" TO 24"
34"	None	4"	30°	3/8"	9"	6" TO 24"
36"	None	4"	30°	3/8"	9 1/2"	6" TO 24"
38"	None	4"	30°	3/8"	10"	6" TO 24"
40"	None	4"	30°	3/8"	10 9/16"	6" TO 24"
42"	None	4"	30°	3/8"	11 1/16"	6" TO 24"
44"	None	4"	30°	3/8"	11 9/16"	6" TO 24"
46"	None	4"	30°	3/8"	12 1/8"	6" TO 24"
48"	None	4"	30°	3/8"	12 5/8"	6" TO 24"



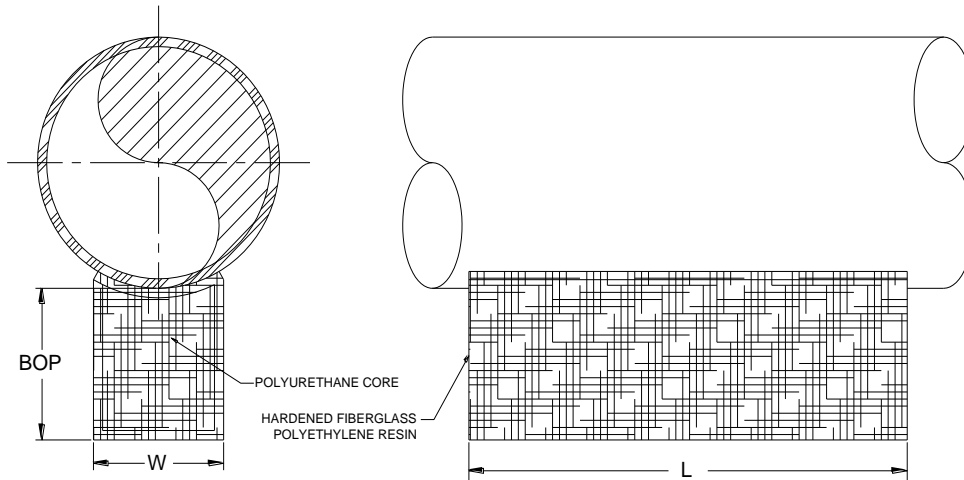
MEDIUM DUTY 30°, 60° AND 90°



PIPE SIZE	MEDIUM DUTY WALL THICK.	SIZE				
		BOP	ANGLE	PAD THK	W	L
2"	1/4"	4"	90°	1/4"	2 1/6"	6" TO 24"
2 1/2"	1/4"	4"	90°	1/4"	2 3/8"	6" TO 24"
3"	1/4"	4"	90°	1/4"	2 13/16"	6" TO 24"
3 1/2"	1/4"	4"	90°	1/4"	3 3/16"	6" TO 24"
4"	1/4"	4"	90°	1/4"	3 9/16"	6" TO 24"
6"	1/4"	4"	60°	1/4"	3 9/16"	6" TO 24"
8"	1/4"	4"	60°	1/4"	4 9/16"	6" TO 24"
10"	1/4"	4"	60°	1/4"	5 5/8"	6" TO 24"
12"	1/4"	4"	30°	1/4"	3 7/16"	6" TO 24"
14"	1/4"	4"	30°	1/4"	3 3/4"	6" TO 24"
16"	1/4"	4"	30°	1/4"	4 1/4"	6" TO 24"
18"	1/4"	4"	30°	1/4"	4 13/16"	6" TO 24"
20"	1/4"	4"	30°	1/4"	5 5/16"	6" TO 24"
24"	3/8"	4"	30°	3/8"	6 3/8"	6" TO 24"
26"	3/8"	4"	30°	3/8"	6 15/16"	6" TO 24"
28"	3/8"	4"	30°	3/8"	7 7/16"	6" TO 24"
30"	3/8"	4"	30°	3/8"	7 15/16"	6" TO 24"
32"	3/8"	4"	30°	3/8"	8 1/2"	6" TO 24"
34"	3/8"	4"	30°	3/8"	9"	6" TO 24"
36"	3/8"	4"	30°	3/8"	9 1/2"	6" TO 24"
38"	3/8"	4"	30°	3/8"	10"	6" TO 24"
40"	3/8"	4"	30°	3/8"	10 9/16"	6" TO 24"
42"	3/8"	4"	30°	3/8"	11 1/16"	6" TO 24"
44"	3/8"	4"	30°	3/8"	11 9/16"	6" TO 24"
46"	3/8"	4"	30°	3/8"	12 1/8"	6" TO 24"
48"	3/8"	4"	30°	3/8"	12 5/8"	6" TO 24"



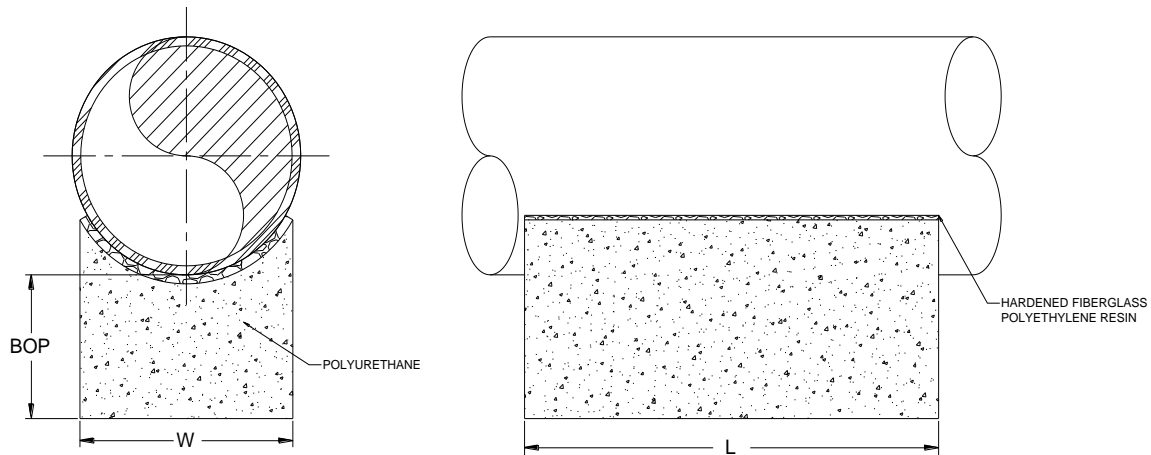
HEAVY DUTY 30°, 60° AND 90°



PIPE SIZE	HEAVY DUTY WALL THICK.	SIZE				
		BOP	ANGLE	PAD THK	W	L
2"	3/8"	4"	90°	3/8"	2 1/16"	6" TO 24"
2 1/2"	3/8"	4"	90°	3/8"	2 3/8"	6" TO 24"
3"	3/8"	4"	90°	3/8"	2 13/16"	6" TO 24"
3 1/2"	3/8"	4"	90°	3/8"	3 3/16"	6" TO 24"
4"	3/8"	4"	90°	3/8"	3 9/16"	6" TO 24"
6"	3/8"	4"	60°	3/8"	3 9/16"	6" TO 24"
8"	3/8"	4"	60°	3/8"	4 9/16"	6" TO 24"
10"	3/8"	4"	60°	3/8"	5 5/8"	6" TO 24"
12"	3/8"	4"	30°	3/8"	3 7/16"	6" TO 24"
14"	3/8"	4"	30°	3/8"	3 3/4"	6" TO 24"
16"	3/8"	4"	30°	3/8"	4 1/4"	6" TO 24"
18"	3/8"	4"	30°	3/8"	4 13/16"	6" TO 24"
20"	3/8"	4"	30°	3/8"	5 5/16"	6" TO 24"
24"	1/2"	4"	30°	1/2"	6 3/8"	6" TO 24"
26"	1/2"	4"	30°	1/2"	6 15/16"	6" TO 24"
28"	1/2"	4"	30°	1/2"	7 7/16"	6" TO 24"
30"	1/2"	4"	30°	1/2"	7 15/16"	6" TO 24"
32"	1/2"	4"	30°	1/2"	8 1/2"	6" TO 24"
34"	1/2"	4"	30°	1/2"	9"	6" TO 24"
36"	1/2"	4"	30°	1/2"	9 1/2"	6" TO 24"
38"	1/2"	4"	30°	1/2"	10"	6" TO 24"
40"	1/2"	4"	30°	1/2"	10 9/16"	6" TO 24"
42"	1/2"	4"	30°	1/2"	11 1/16"	6" TO 24"
44"	1/2"	4"	30°	1/2"	11 9/16"	6" TO 24"
46"	1/2"	4"	30°	1/2"	12 1/8"	6" TO 24"
48"	1/2"	4"	30°	1/2"	12 5/8"	6" TO 24"



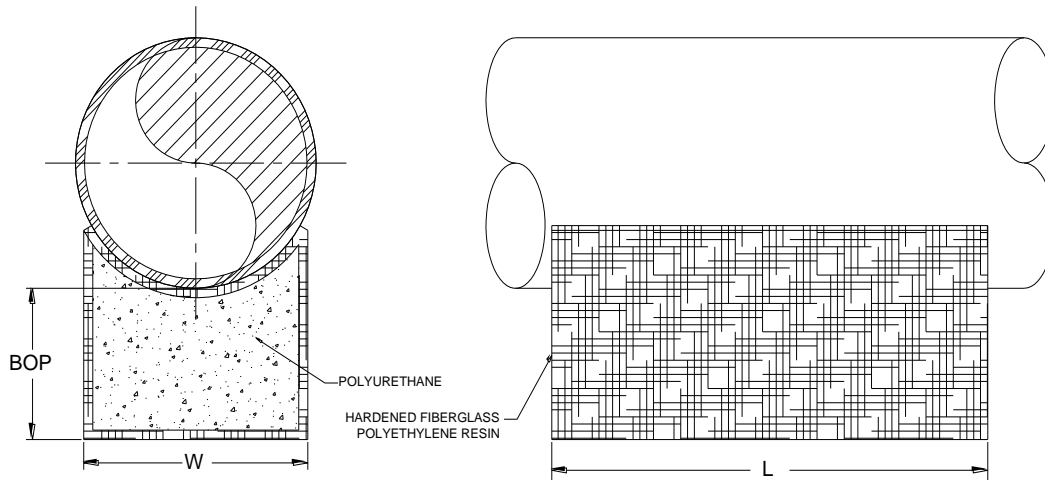
LIGHT DUTY 120°



PIPE SIZE	LIGHT DUTY WALL THICK.	SIZE				
		BOP	ANGLE	PAD THK	W	L
2"	None	4"	120°	3/8"	2 1/2"	6" TO 24"
2 1/2"	None	4"	120°	3/8"	2 15/16"	6" TO 24"
3"	None	4"	120°	3/8"	3 7/16"	6" TO 24"
3 1/2"	None	4"	120°	3/8"	3 7/8"	6" TO 24"
4"	None	4"	120°	3/8"	4 5/16"	6" TO 24"
6"	None	4"	120°	3/8"	6 3/16"	6" TO 24"
8"	None	4"	120°	3/8"	7 7/8"	6" TO 24"
10"	None	4"	120°	3/8"	9 3/4"	6" TO 24"
12"	None	4"	120°	3/8"	11 1/2"	6" TO 24"
14"	None	4"	120°	3/8"	12 9/16"	6" TO 24"
16"	None	4"	120°	3/8"	14 5/16"	6" TO 24"
18"	None	4"	120°	3/8"	16"	6" TO 24"
20"	None	4"	120°	3/8"	17 3/4"	6" TO 24"
24"	None	4"	120°	1/2"	21 7/16"	6" TO 24"
26"	None	4"	120°	1/2"	23 3/16"	6" TO 24"
28"	None	4"	120°	1/2"	24 7/8"	6" TO 24"
30"	None	4"	120°	1/2"	26 5/8"	6" TO 24"
32"	None	4"	120°	1/2"	28 3/8"	6" TO 24"
34"	None	4"	120°	1/2"	30 1/8"	6" TO 24"
36"	None	4"	120°	1/2"	31 13/16"	6" TO 24"
38"	None	4"	120°	1/2"	33 9/16"	6" TO 24"
40"	None	4"	120°	1/2"	35 5/16"	6" TO 24"
42"	None	4"	120°	1/2"	37"	6" TO 24"
44"	None	4"	120°	1/2"	38 3/4"	6" TO 24"
46"	None	4"	120°	1/2"	40 1/2"	6" TO 24"
48"	None	4"	120°	1/2"	42 3/16"	6" TO 24"



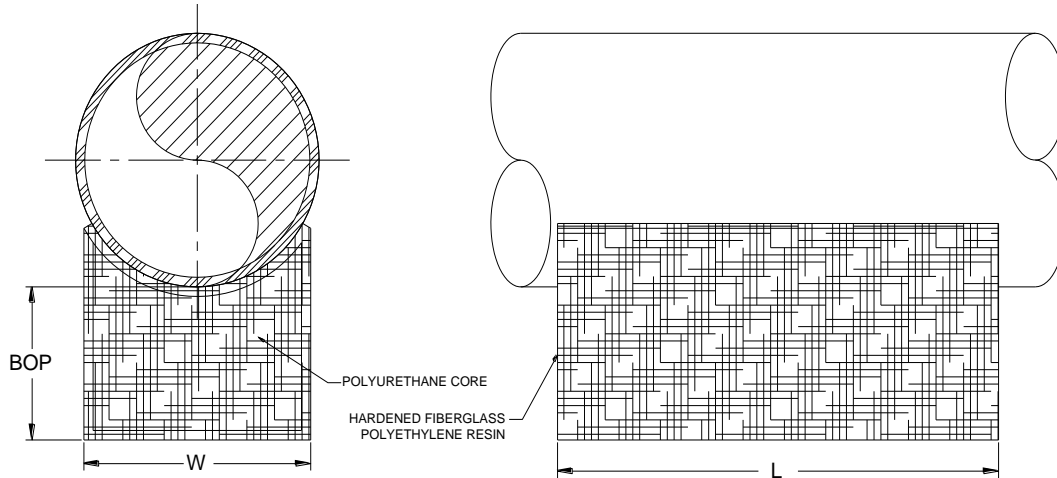
MEDIUM DUTY 120°



PIPE SIZE	MEDIUM DUTY WALL THICK.	SIZE				
		BOP	ANGLE	PAD THK	W	L
2"	1/4"	4"	120°	1/4"	2 1/2"	6" TO 24"
2 1/2"	1/4"	4"	120°	1/4"	2 15/16"	6" TO 24"
3"	1/4"	4"	120°	1/4"	3 7/16"	6" TO 24"
3 1/2"	1/4"	4"	120°	1/4"	3 7/8"	6" TO 24"
4"	1/4"	4"	120°	1/4"	4 5/16"	6" TO 24"
6"	1/4"	4"	120°	1/4"	6 3/16"	6" TO 24"
8"	1/4"	4"	120°	1/4"	7 7/8"	6" TO 24"
10"	1/4"	4"	120°	1/4"	9 3/4"	6" TO 24"
12"	1/4"	4"	120°	1/4"	11 1/2"	6" TO 24"
14"	1/4"	4"	120°	1/4"	12 9/16"	6" TO 24"
16"	1/4"	4"	120°	1/4"	14 5/16"	6" TO 24"
18"	1/4"	4"	120°	1/4"	16"	6" TO 24"
20"	1/4"	4"	120°	1/4"	17 3/4"	6" TO 24"
24"	3/8"	4"	120°	3/8"	21 7/16"	6" TO 24"
26"	3/8"	4"	120°	3/8"	23 3/16"	6" TO 24"
28"	3/8"	4"	120°	3/8"	24 7/8"	6" TO 24"
30"	3/8"	4"	120°	3/8"	26 5/8"	6" TO 24"
32"	3/8"	4"	120°	3/8"	28 3/8"	6" TO 24"
34"	3/8"	4"	120°	3/8"	30 1/8"	6" TO 24"
36"	3/8"	4"	120°	3/8"	31 13/16"	6" TO 24"
38"	3/8"	4"	120°	3/8"	33 9/16"	6" TO 24"
40"	3/8"	4"	120°	3/8"	35 5/16"	6" TO 24"
42"	3/8"	4"	120°	3/8"	37"	6" TO 24"
44"	3/8"	4"	120°	3/8"	38 3/4"	6" TO 24"
46"	3/8"	4"	120°	3/8"	40 1/2"	6" TO 24"
48"	3/8"	4"	120°	3/8"	42 3/16"	6" TO 24"



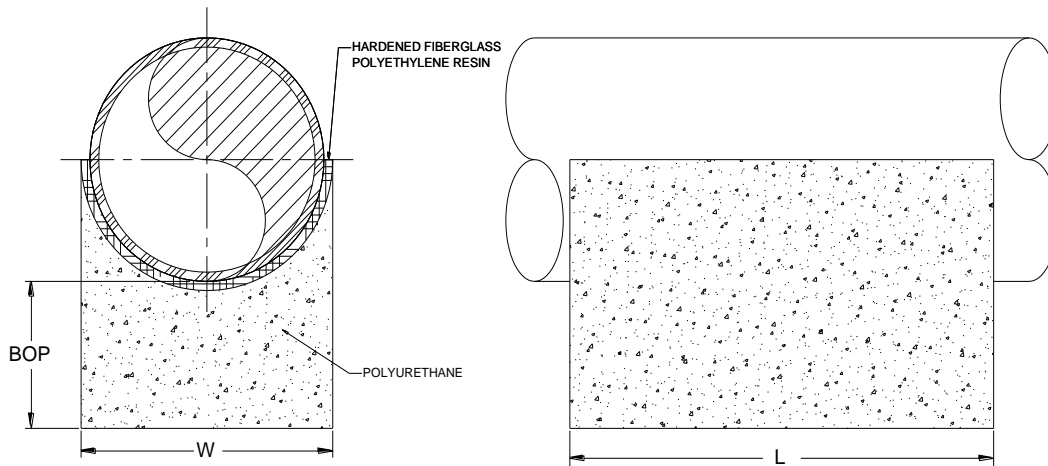
HEAVY DUTY 120°



PIPE SIZE	HEAVY DUTY WALL THICK.	SIZE				
		BOP	ANGLE	PAD THK	W	L
2"	3/8"	4"	120°	3/8"	2 1/2"	6" TO 24"
2 1/2"	3/8"	4"	120°	3/8"	2 15/16"	6" TO 24"
3"	3/8"	4"	120°	3/8"	3 7/16"	6" TO 24"
3 1/2"	3/8"	4"	120°	3/8"	3 7/8"	6" TO 24"
4"	3/8"	4"	120°	3/8"	4 5/16"	6" TO 24"
6"	3/8"	4"	120°	3/8"	6 3/16"	6" TO 24"
8"	3/8"	4"	120°	3/8"	7 7/8"	6" TO 24"
10"	3/8"	4"	120°	3/8"	9 3/4"	6" TO 24"
12"	3/8"	4"	120°	3/8"	11 1/2"	6" TO 24"
14"	3/8"	4"	120°	3/8"	12 9/16"	6" TO 24"
16"	3/8"	4"	120°	3/8"	14 5/16"	6" TO 24"
18"	3/8"	4"	120°	3/8"	16"	6" TO 24"
20"	3/8"	4"	120°	3/8"	17 3/4"	6" TO 24"
24"	1/2"	4"	120°	1/2"	21 7/16"	6" TO 24"
26"	1/2"	4"	120°	1/2"	23 3/16"	6" TO 24"
28"	1/2"	4"	120°	1/2"	24 7/8"	6" TO 24"
30"	1/2"	4"	120°	1/2"	26 5/8"	6" TO 24"
32"	1/2"	4"	120°	1/2"	28 3/8"	6" TO 24"
34"	1/2"	4"	120°	1/2"	30 1/8"	6" TO 24"
36"	1/2"	4"	120°	1/2"	31 13/16"	6" TO 24"
38"	1/2"	4"	120°	1/2"	33 9/16"	6" TO 24"
40"	1/2"	4"	120°	1/2"	35 5/16"	6" TO 24"
42"	1/2"	4"	120°	1/2"	37"	6" TO 24"
44"	1/2"	4"	120°	1/2"	38 3/4"	6" TO 24"
46"	1/2"	4"	120°	1/2"	40 1/2"	6" TO 24"
48"	1/2"	4"	120°	1/2"	42 3/16"	6" TO 24"



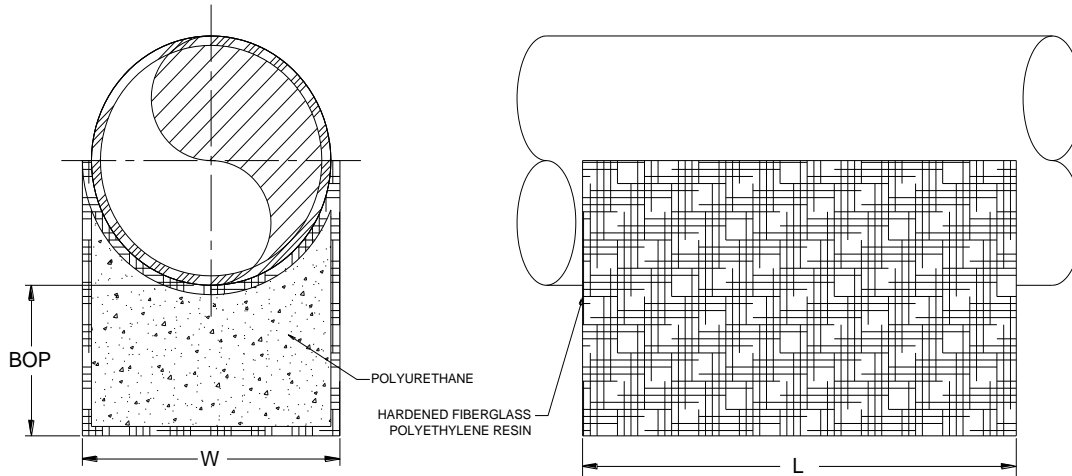
LIGHT DUTY 180°



PIPE SIZE	LIGHT DUTY WALL THICK.	SIZE				
		BOP	ANGLE	PAD THK	W	L
2"	None	4"	180°	3/8"	2 7/8"	6" TO 24"
2 1/2"	None	4"	180°	3/8"	3 3/8"	6" TO 24"
3"	None	4"	180°	3/8"	4"	6" TO 24"
3 1/2"	None	4"	180°	3/8"	4 1/2"	6" TO 24"
4"	None	4"	180°	3/8"	5"	6" TO 24"
6"	None	4"	180°	3/8"	7 1/8"	6" TO 24"
8"	None	4"	180°	3/8"	9 1/8"	6" TO 24"
10"	None	4"	180°	3/8"	11 1/4"	6" TO 24"
12"	None	4"	180°	3/8"	13 1/4"	6" TO 24"
14"	None	4"	180°	3/8"	14 1/2"	6" TO 24"
16"	None	4"	180°	3/8"	16 1/2"	6" TO 24"
18"	None	4"	180°	3/8"	18 1/2"	6" TO 24"
20"	None	4"	180°	3/8"	20 1/2"	6" TO 24"
24"	None	4"	180°	1/2"	24 3/4"	6" TO 24"
26"	None	4"	180°	1/2"	26 3/4"	6" TO 24"
28"	None	4"	180°	1/2"	28 3/4"	6" TO 24"
30"	None	4"	180°	1/2"	30 3/4"	6" TO 24"
32"	None	4"	180°	1/2"	32 3/4"	6" TO 24"
34"	None	4"	180°	1/2"	34 3/4"	6" TO 24"
36"	None	4"	180°	1/2"	36 3/4"	6" TO 24"
38"	None	4"	180°	1/2"	38 3/4"	6" TO 24"
40"	None	4"	180°	1/2"	40 3/4"	6" TO 24"
42"	None	4"	180°	1/2"	42 3/4"	6" TO 24"
44"	None	4"	180°	1/2"	44 3/4"	6" TO 24"
46"	None	4"	180°	1/2"	46 3/4"	6" TO 24"
48"	None	4"	180°	1/2"	48 3/4"	6" TO 24"



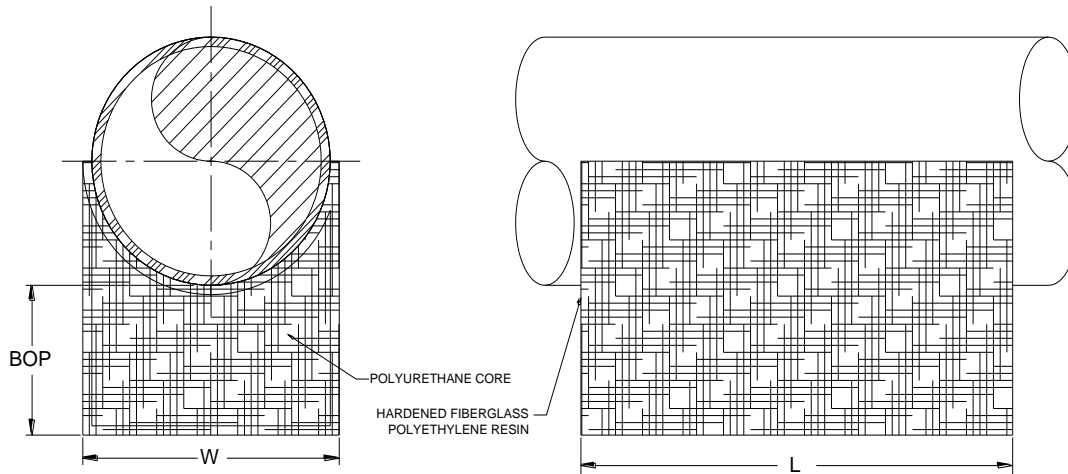
MEDIUM DUTY 180°



PIPE SIZE	MEDIUM DUTY WALL THICK.	SIZE				
		BOP	ANGLE	PAD THK	W	L
2"	1/4"	4"	180°	1/4"	2 7/8"	6" TO 24"
2 1/2"	1/4"	4"	180°	1/4"	3 3/8"	6" TO 24"
3"	1/4"	4"	180°	1/4"	4"	6" TO 24"
3 1/2"	1/4"	4"	180°	1/4"	4 1/2"	6" TO 24"
4"	1/4"	4"	180°	1/4"	5"	6" TO 24"
6"	1/4"	4"	180°	1/4"	7 1/8"	6" TO 24"
8"	1/4"	4"	180°	1/4"	9 1/8"	6" TO 24"
10"	1/4"	4"	180°	1/4"	11 1/4"	6" TO 24"
12"	1/4"	4"	180°	1/4"	13 1/4"	6" TO 24"
14"	1/4"	4"	180°	1/4"	14 1/2"	6" TO 24"
16"	1/4"	4"	180°	1/4"	16 1/2"	6" TO 24"
18"	1/4"	4"	180°	1/4"	18 1/2"	6" TO 24"
20"	1/4"	4"	180°	1/4"	20 1/2"	6" TO 24"
24"	3/8"	4"	180°	3/8"	24 3/4"	6" TO 24"
26"	3/8"	4"	180°	3/8"	26 3/4"	6" TO 24"
28"	3/8"	4"	180°	3/8"	28 3/4"	6" TO 24"
30"	3/8"	4"	180°	3/8"	30 3/4"	6" TO 24"
32"	3/8"	4"	180°	3/8"	32 3/4"	6" TO 24"
34"	3/8"	4"	180°	3/8"	34 3/4"	6" TO 24"
36"	3/8"	4"	180°	3/8"	36 3/4"	6" TO 24"
38"	3/8"	4"	180°	3/8"	38 3/4"	6" TO 24"
40"	3/8"	4"	180°	3/8"	40 3/4"	6" TO 24"
42"	3/8"	4"	180°	3/8"	42 3/4"	6" TO 24"
44"	3/8"	4"	180°	3/8"	44 3/4"	6" TO 24"
46"	3/8"	4"	180°	3/8"	46 3/4"	6" TO 24"
48"	3/8"	4"	180°	3/8"	48 3/4"	6" TO 24"



HEAVY DUTY 180°

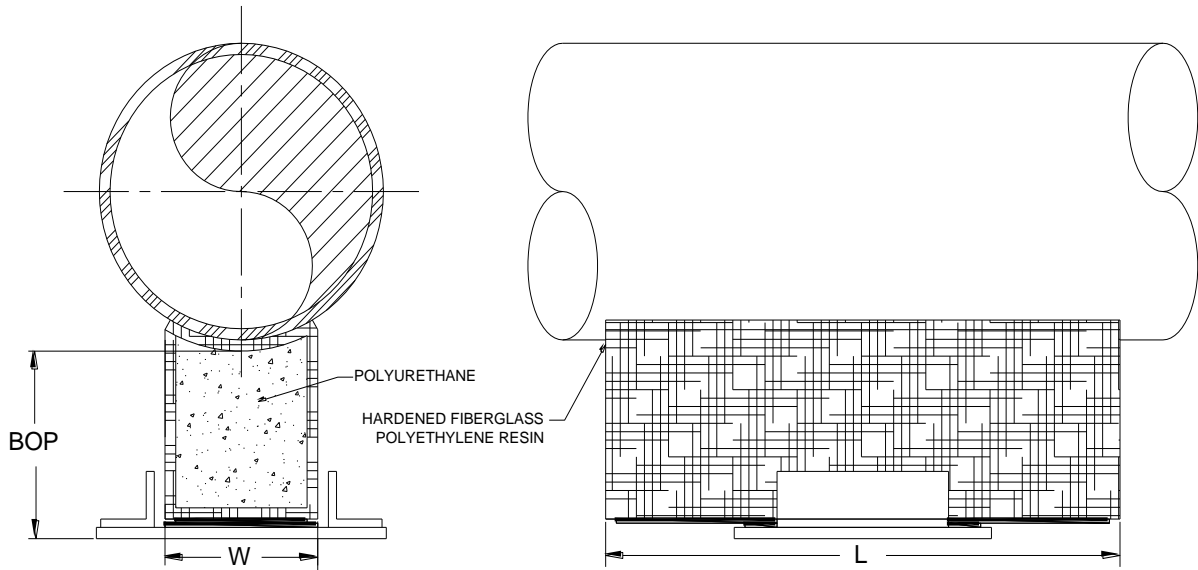


PIPE SIZE	HEAVY DUTY WALL THICK.	SIZE				
		BOP	ANGLE	PAD THK	W	L
2"	3/8"	4"	180°	3/8"	3 1/8"	6" TO 24"
2 1/2"	3/8"	4"	180°	3/8"	3 5/8"	6" TO 24"
3"	3/8"	4"	180°	3/8"	4 1/4"	6" TO 24"
3 1/2"	3/8"	4"	180°	3/8"	4 3/4"	6" TO 24"
4"	3/8"	4"	180°	3/8"	5 1/4"	6" TO 24"
6"	3/8"	4"	180°	3/8"	7 3/8"	6" TO 24"
8"	3/8"	4"	180°	3/8"	9 3/8"	6" TO 24"
10"	3/8"	4"	180°	3/8"	11 1/2"	6" TO 24"
12"	3/8"	4"	180°	3/8"	13 1/2"	6" TO 24"
14"	3/8"	4"	180°	3/8"	14 3/4"	6" TO 24"
16"	3/8"	4"	180°	3/8"	16 3/4"	6" TO 24"
18"	3/8"	4"	180°	3/8"	18 3/4"	6" TO 24"
20"	3/8"	4"	180°	3/8"	20 3/4"	6" TO 24"
24"	1/2"	4"	180°	1/2"	25"	6" TO 24"
26"	1/2"	4"	180°	1/2"	27"	6" TO 24"
28"	1/2"	4"	180°	1/2"	29"	6" TO 24"
30"	1/2"	4"	180°	1/2"	31"	6" TO 24"
32"	1/2"	4"	180°	1/2"	33"	6" TO 24"
34"	1/2"	4"	180°	1/2"	35"	6" TO 24"
36"	1/2"	4"	180°	1/2"	37"	6" TO 24"
38"	1/2"	4"	180°	1/2"	39"	6" TO 24"
40"	1/2"	4"	180°	1/2"	41"	6" TO 24"
42"	1/2"	4"	180°	1/2"	43"	6" TO 24"
44"	1/2"	4"	180°	1/2"	45"	6" TO 24"
46"	1/2"	4"	180°	1/2"	47"	6" TO 24"
48"	1/2"	4"	180°	1/2"	49"	6" TO 24"

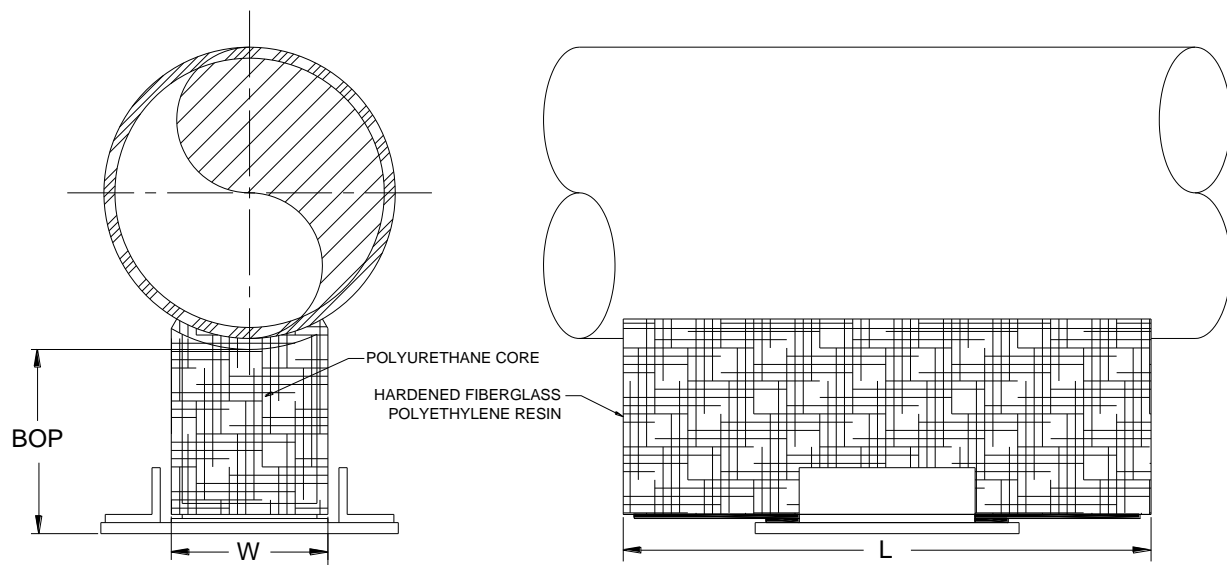


Guided TRI*COMPOSITE™ Pipe Supports

Guided Medium Duty 30° and 60° using TRI*SLIDE™ Slides

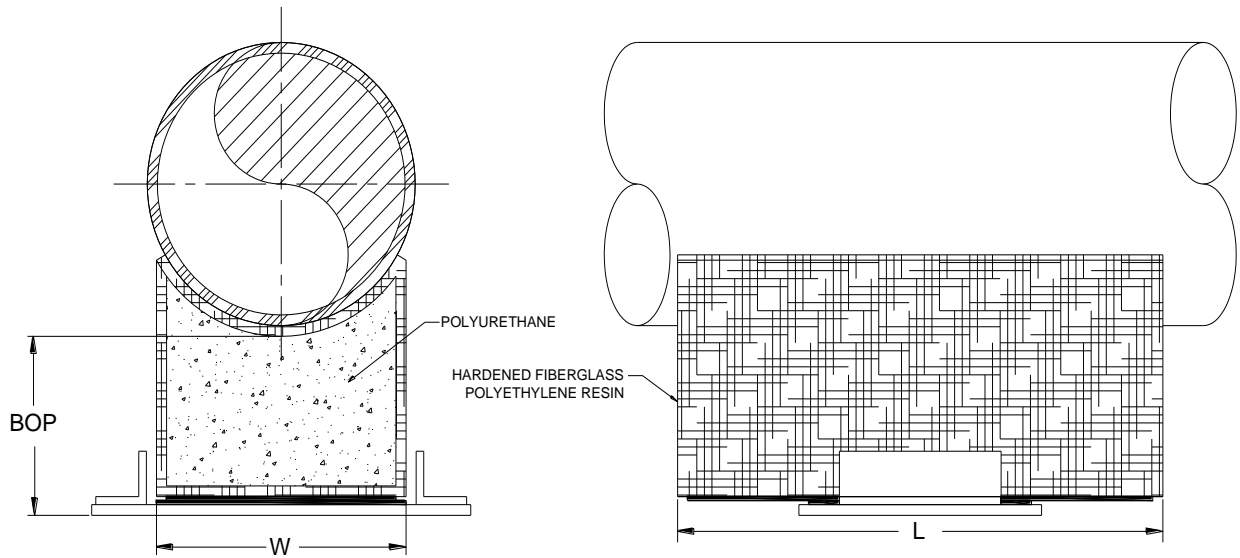


Guided Heavy Duty 30° and 60° using TRI*SLIDE™ Slides

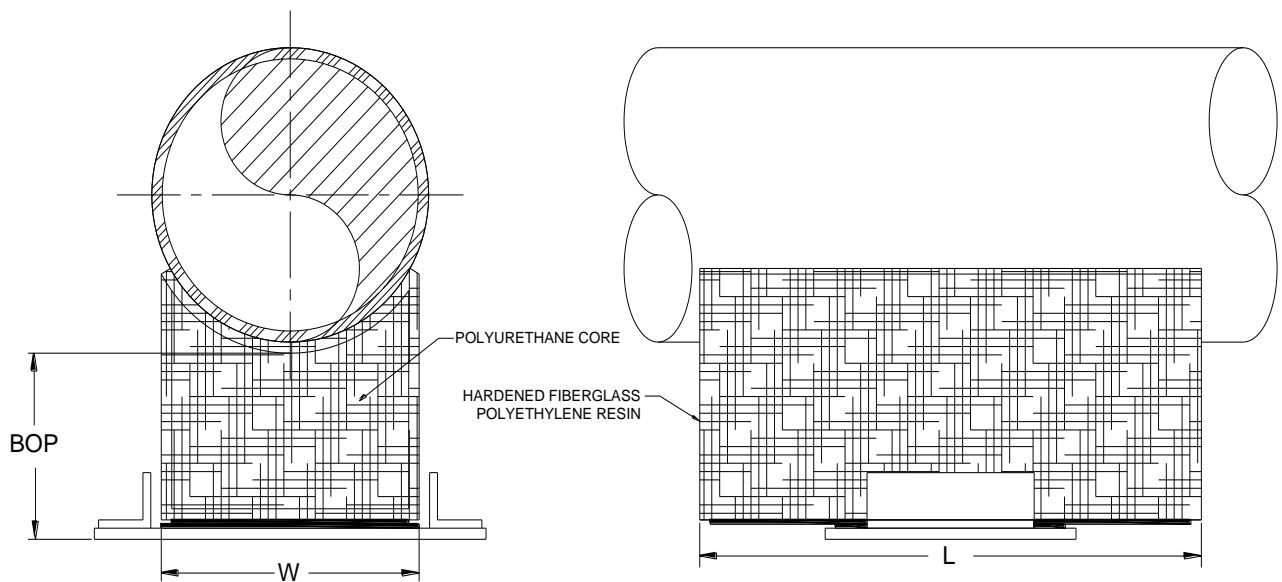




Guided Medium Duty 90° and 120° using TRI*SLIDE™ Slides

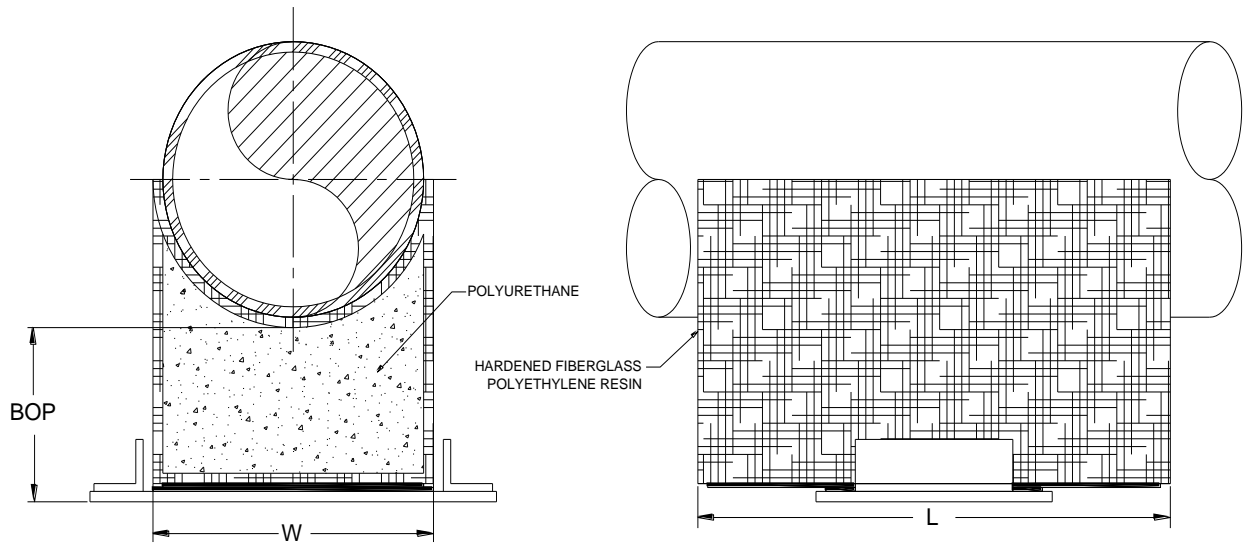


Guided Heavy Duty 90° and 120° using TRI*SLIDE™ Slides





Guided Medium Duty 180° using TRI*SLIDE™ Slides



Guided Heavy Duty 180° using TRI*SLIDE™ Slides

